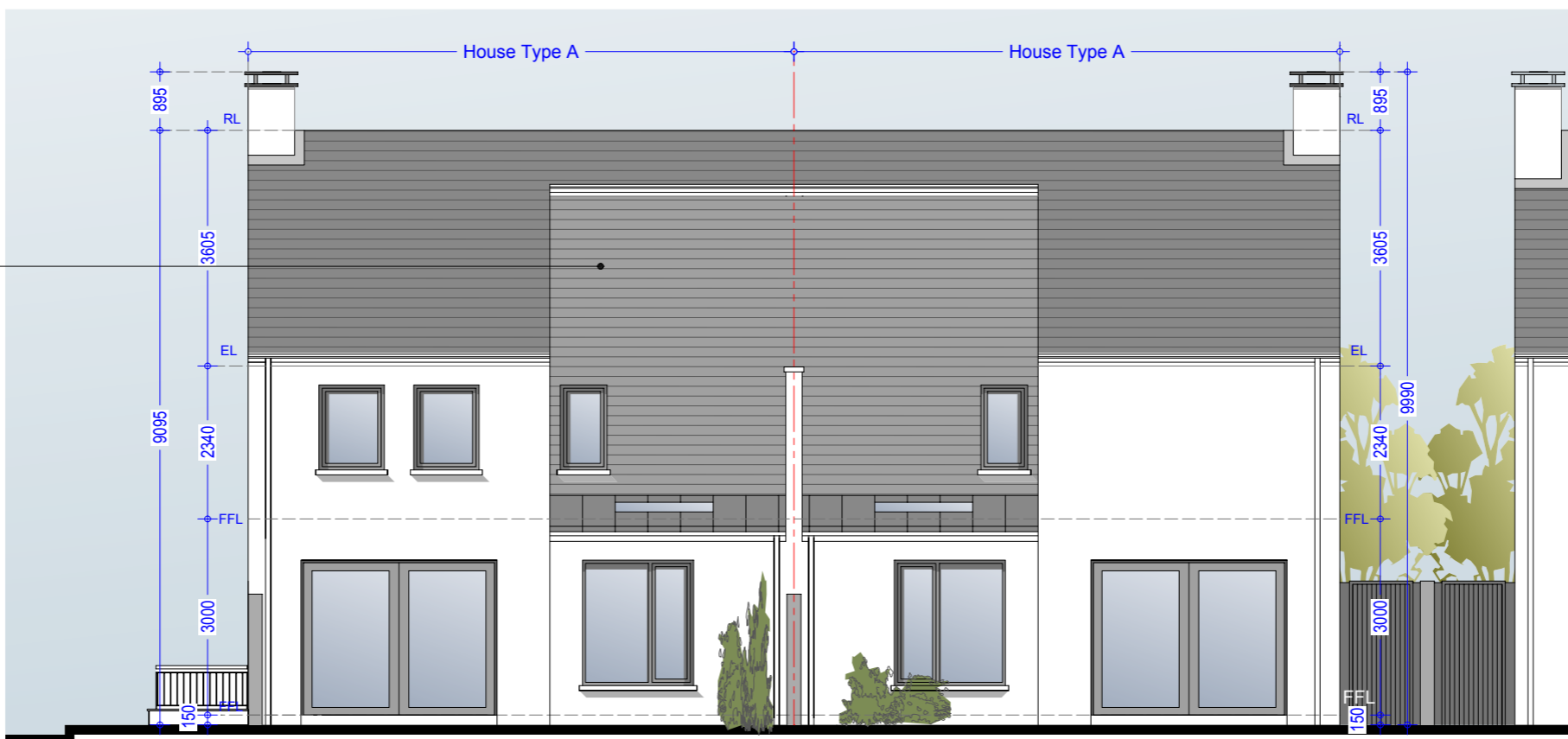




Front Elevation - House Type A - (Mid Street)

Front Elevation - House Type A - (End of Street)



Rear Elevation - House Type A - (End of Street)

Rear Elevation - House Type A - (Mid Street)

"Rivendale" natural slate to be applied as a vertical cladding to rear elevations.

House No's:-
67-78, Inclusive
83-94, Inclusive
104, 105, 108, 109

Material Specifications

External Wall - Smooth render painted white - projections will be dark grey brick or natural stone.
Rear elevation to this house to have natural blue/black slate applied as a wall cladding.
Windows - Upvc Double Glazed windows.
External Doors - Aluminium/Timber composite front door.

Material Specifications (Continued)

Roof Finish - Blue/Black Slate.
Rainwater Goods - Pvc - Colour black.
Chimney Caps - Powder coated steel - Colour black.
High Boundary walls - Natural Stone / smooth render painted white / dark grey brick.
Kitchen Roof - Zinc Standing seam - Colour: Grey

Material Specifications (Continued)

Low Boundary walls - Smooth render painted white with limestone cappings and steel railing painted.

Please Refer to north point and finished floor levels in the site layout plan (992.PL.005 Rev 0).

Oldtown, Celbridge, Co. Kildare

House Type A - 3 Bed Semi Detached
Front & Rear Elevation (Mid & End of Street)

Drg. 992.PL.102

Dec 2018

Scale 1:100 @ A3



HOGAN ASSOCIATES