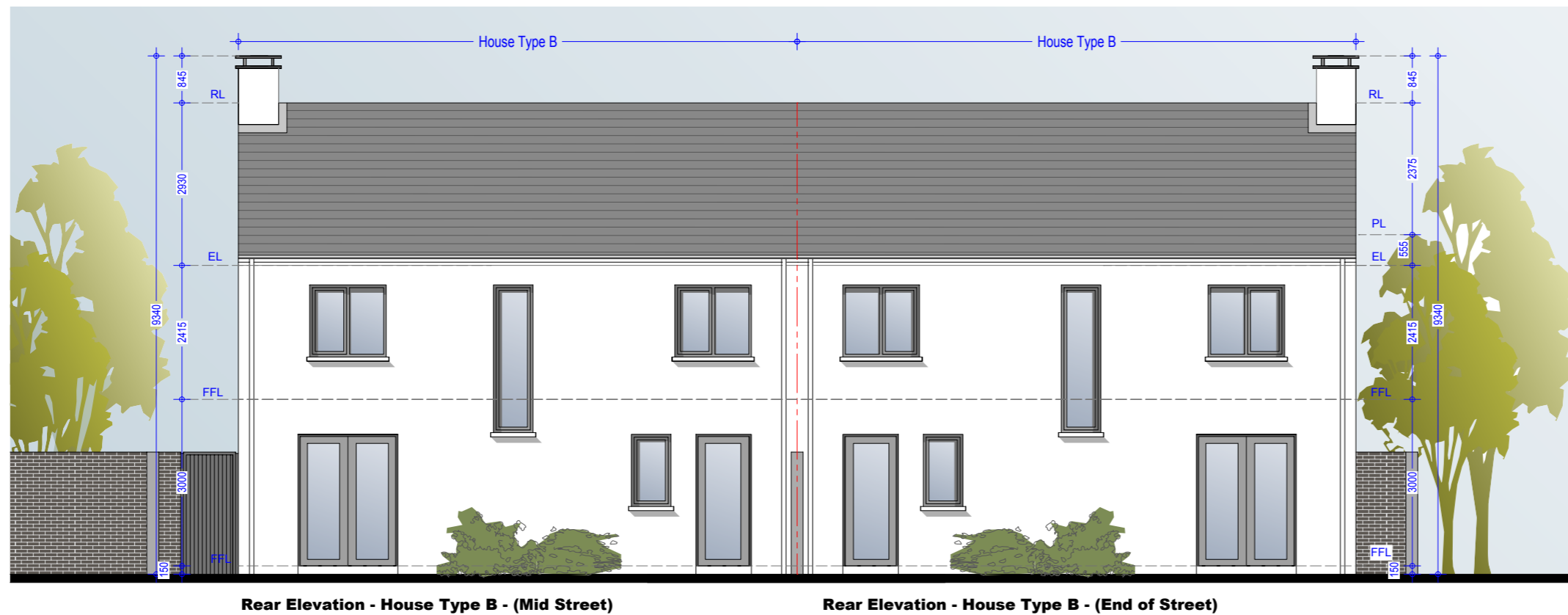


Front Elevation- House Type B - (End of Street)

Front Elevation - House Type B - (Mid Street)



Rear Elevation - House Type B - (Mid Street)

Rear Elevation - House Type B - (End of Street)

**Type B (Semi Detached)**  
 No.s 1-4 Inclusive  
 No's 7, 8, 9, 15, 16, 47, 53, 54, 63, 64, 65, 110, 111, 119, 132, 136, 137, 138, 140, 171, 172, 181, 182.  
 No's 1-4, 7, 8, 9, 132 have stone feature bay window in lieu of brick.  
 See Drg.992.PL.114 & 992.PL.115 for elevation

**Material Specifications**

**External Wall** - Smooth render painted white - projections will be dark grey brick or natural stone.  
**Windows** - Upvc Double Glazed windows.  
**External Doors** - Aluminium/Timber composite front door.  
**Roof Finish** - Blue/Black Slate.  
**Rainwater Goods** - Pvc - Colour black.

**Material Specifications (Continued)**

**Chimney Caps** - Powder coated steel - Colour black.  
**High Boundary walls** - Natural Stone / smooth render painted white / dark grey brick.  
**Low Boundary walls** - Smooth render painted white with limestone cappings and steel railing painted.

Please Refer to north point and finished floor levels in the site layout plan (992.PL.005 Rev 0).

**Oldtown, Celbridge, Co. Kildare**

**House Type B - 4 Bed Semi Detached**  
**Front & Rear Elevations (Mid and End of Street)**

Drg. 992.PL.106

Dec 2018

Scale 1:100 @ A3



HOGAN ASSOCIATES