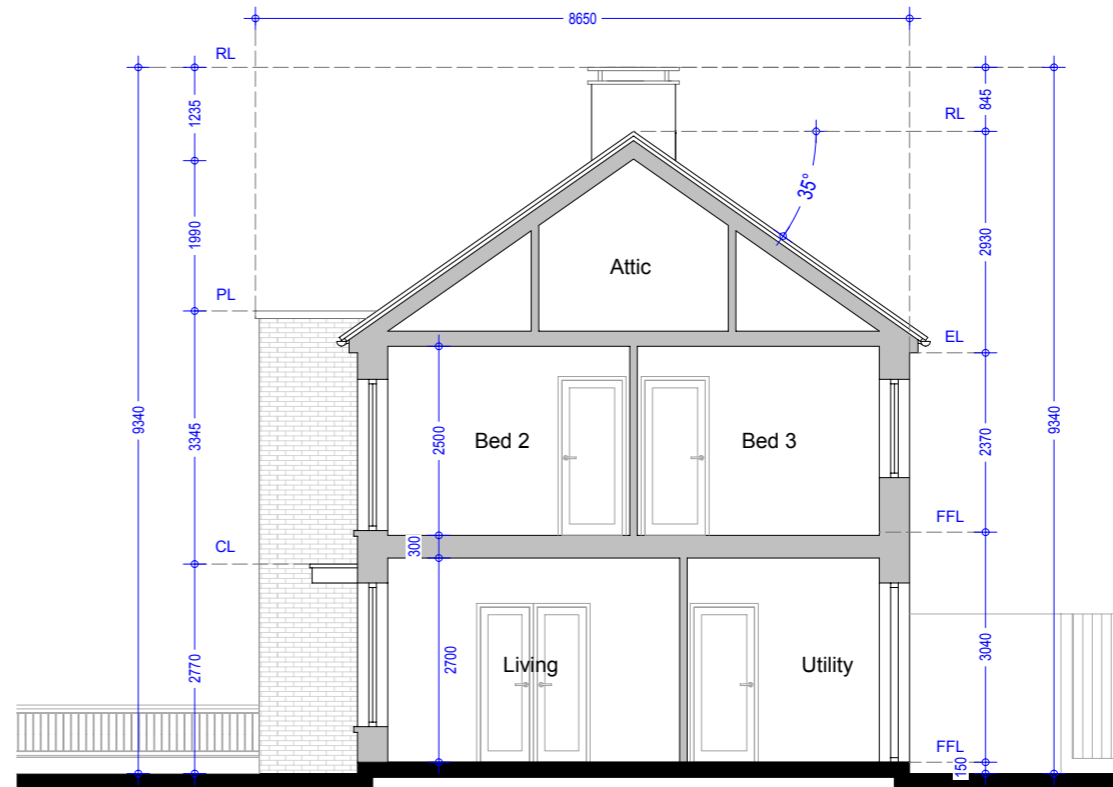
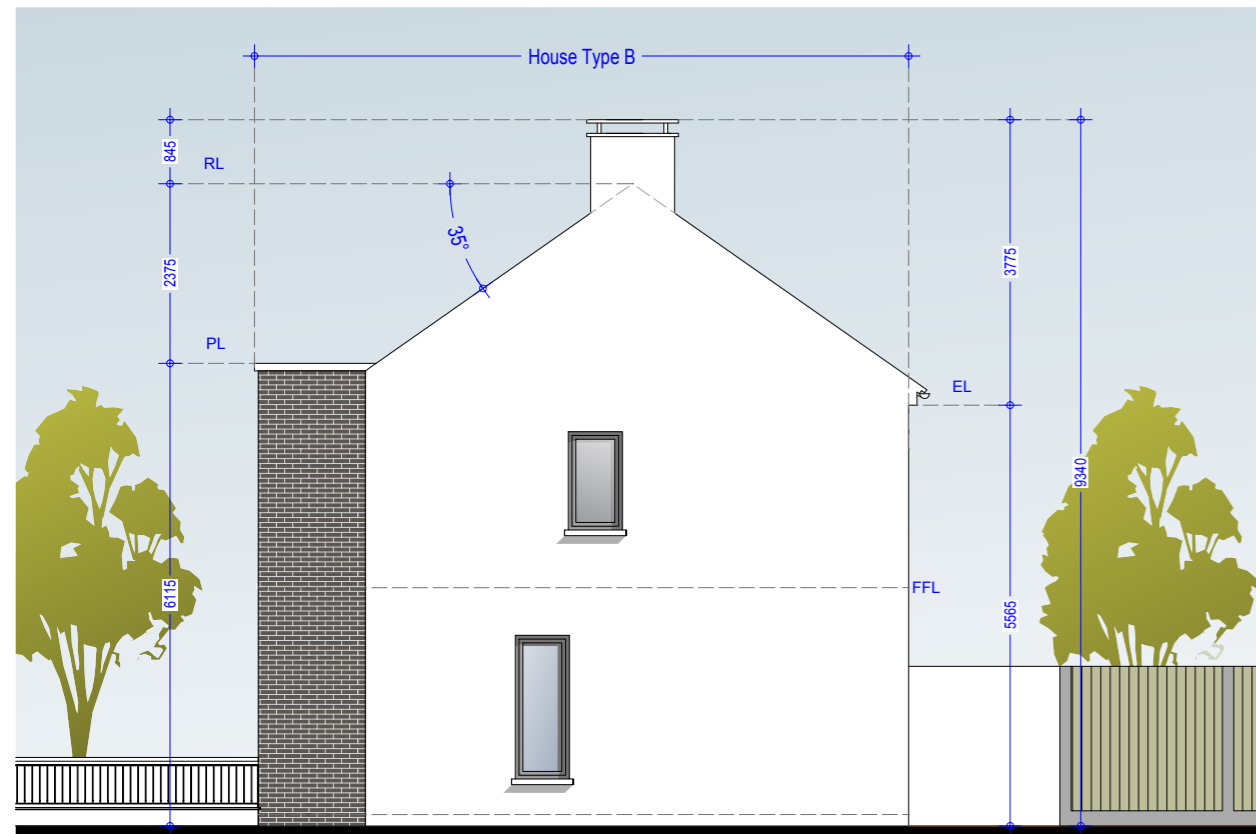


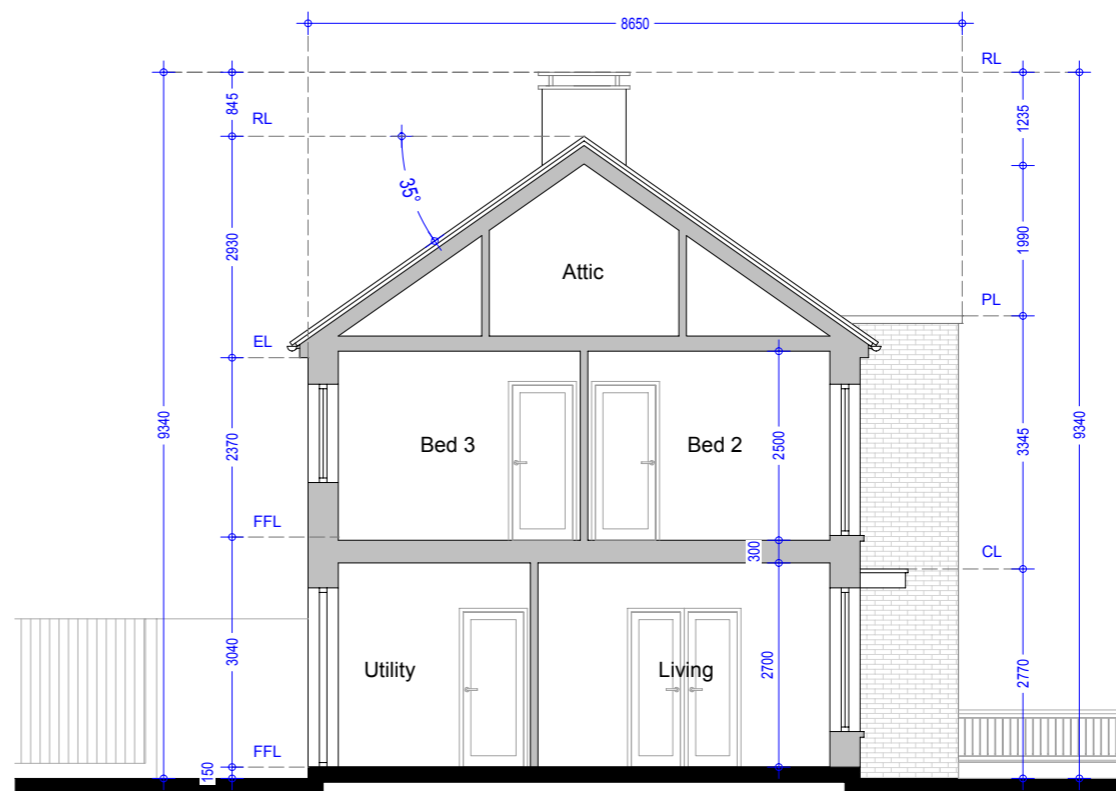
Side Elevation 01 - House Type B - (End of Street)



Section AA - House Type B (End of Street)



Side Elevation 02 - House Type B - (Mid Street)



Section BB - House Type B (Mid Street)

Type B (Semi Detached)
 No.s 1-4 Inclusive
 No's 7, 8, 9, 15, 16, 47, 53, 54, 63, 64, 65, 110, 111, 119, 132, 136, 137, 138, 140, 171, 172, 181, 182.
 No's 1-4, 7, 8, 9, 132 have stone feature bay window in lieu of brick.
 See Drg. 992.PL.114 & 992.PL.115 for elevation

Material Specifications

External Wall - Smooth render painted white - projections will be dark grey brick or natural stone.
Windows - Upvc Double Glazed windows.
External Doors - Aluminium/Timber composite front door.
Roof Finish - Blue/Black Slate.
Rainwater Goods - Pvc - Colour black.

Material Specifications (Continued)

Chimney Caps - Powder coated steel - Colour black.
High Boundary walls - Natural Stone / smooth render painted white / dark grey brick.
Low Boundary walls - Smooth render painted white with limestone cappings and steel railing painted.

Please Refer to north point and finished floor levels in the site layout plan (992.PL.005 Rev 0).

Oldtown, Celbridge, Co. Kildare
House Type B - 4 Bed Semi Detached
Side Elevations & Sections AA & BB
(Mid and End of Street)

Drg. 992.PL.107

Dec 2018

Scale 1:100 @ A3



HOGAN ASSOCIATES