

**Front Elevation - House Type B1 (End of Street)**

**Front Elevation - House Type B (Mid Street)**

**House Type B1 (Semi Detached)**

No.s 10, 11, 120, 121, 133, 139, 247.

No.s 139 & 247 have brick feature bay window, the remainder have stone in lieu.

See Drg. 992.PL.114 & 992.PL.115 for elevation

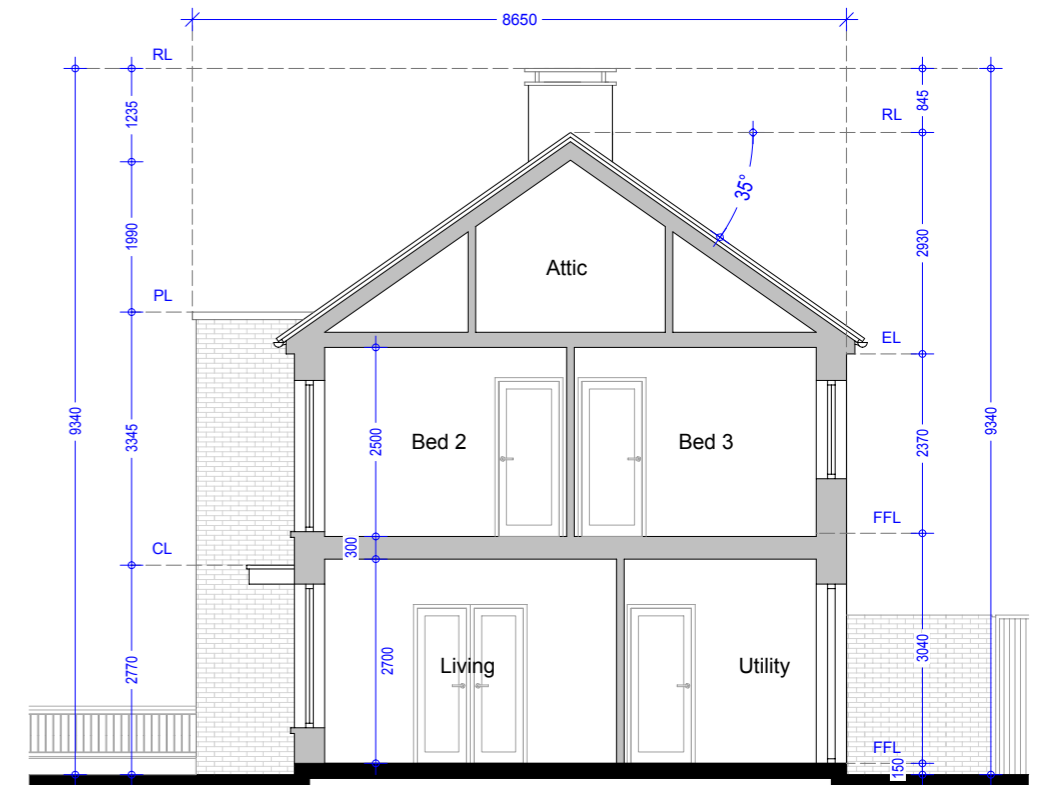
**Type B (Semi Detached)**

No.s 1-4 Inclusive

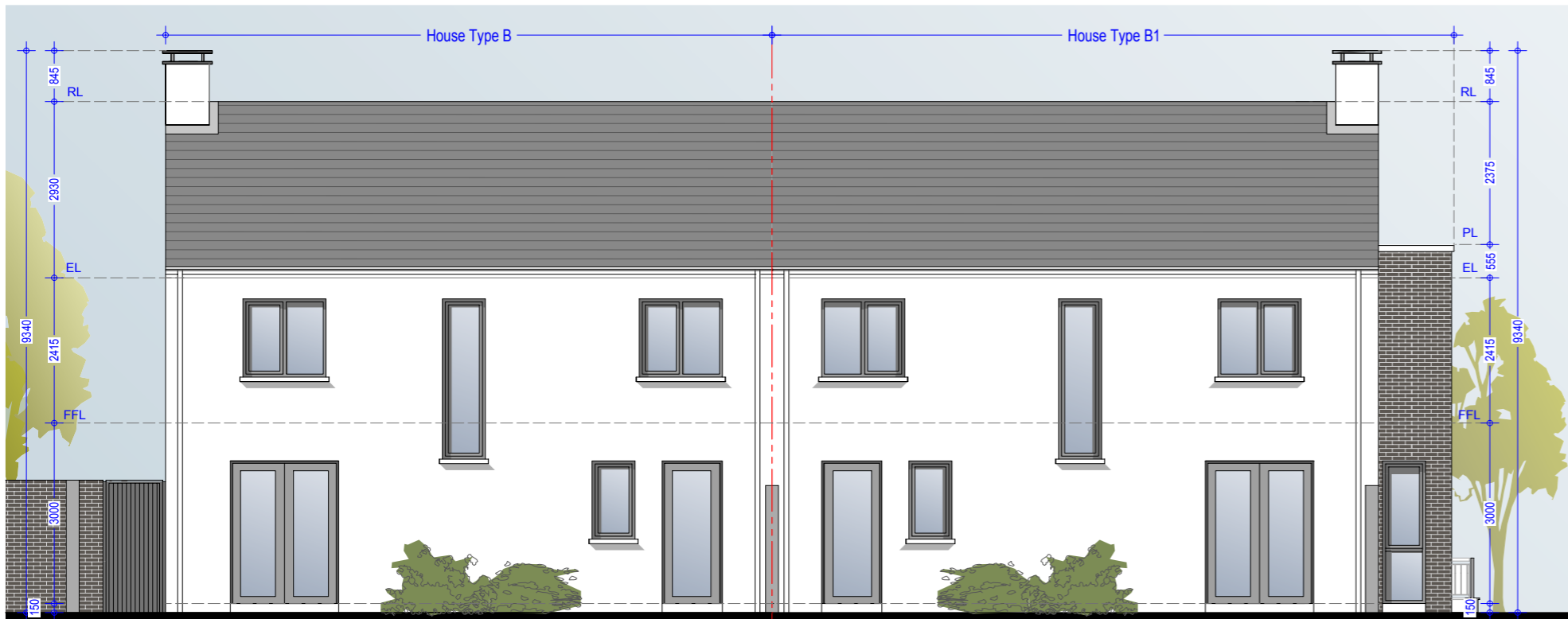
No's 7, 8, 9, 15, 16, 47, 53, 54, 63, 64, 65, 110, 111, 119, 132, 136, 137, 138, 140, 171, 172, 181, 182.

No's 1-4, 7, 8, 9, 132 have stone feature bay window in lieu of brick.

See Drg.992.PL.114 & 992.PL.115 for elevation

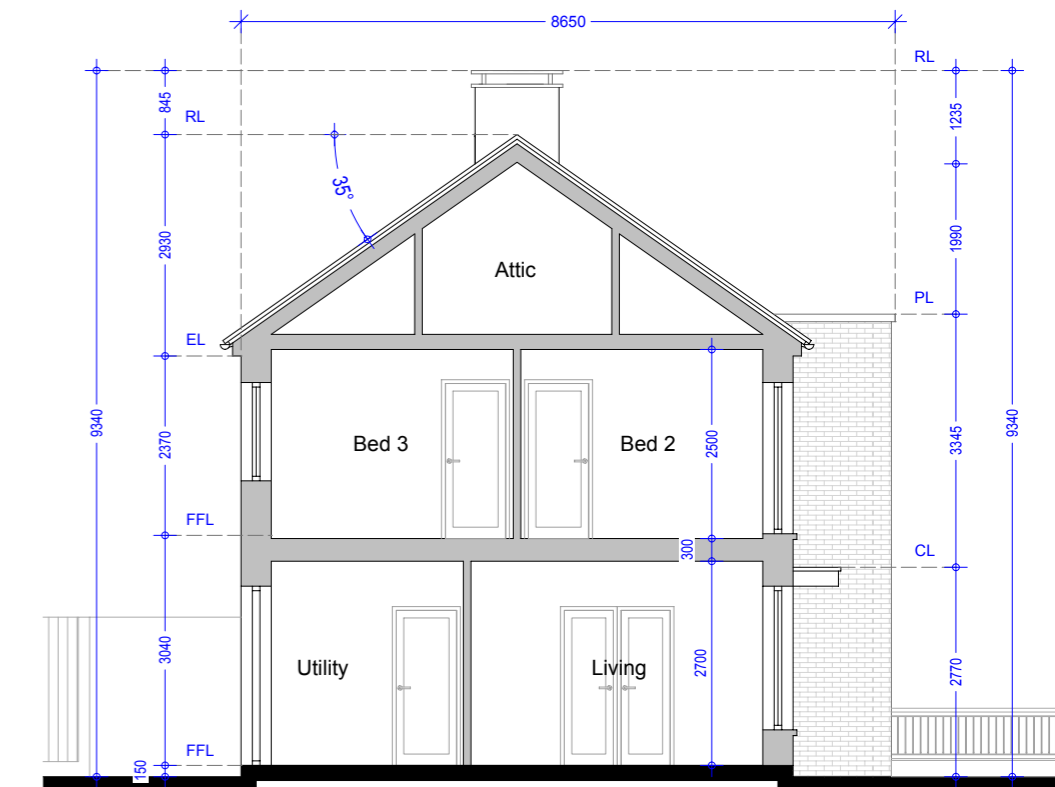


**Section AA - House Type B1 (End of Street)**



**Rear Elevation - House Type B (Mid Street)**

**Rear Elevation - House Type B1 (End of Street)**



**Section BB - House Type B (Mid Street)**

**Material Specifications**

**External Wall** - Smooth render painted white - projections will be dark grey brick or natural stone.

**Windows** - Upvc Double Glazed windows.

**External Doors** - Aluminium/Timber composite front door.

**Roof Finish** - Blue/Black Slate.

**Rainwater Goods** - Pvc - Colour black.

**Material Specifications (Continued)**

**Chimney Caps** - Powder coated steel - Colour black.

**High Boundary walls** - Natural Stone / smooth render painted white / dark grey brick.

**Low Boundary walls** - Smooth render painted white with limestone cappings and steel railing painted.

Please Refer to north point and finished floor levels in the site layout plan (992.PL.005 Rev 0).

**Oldtown, Celbridge, Co. Kildare**

**House Type B1, B - 4 Bed Semi Detached**  
Front & Rear Elevations (Mid and End of Street)

Drg. 992.PL.110

Dec 2018

Scale 1:100 @ A3



HOGAN ASSOCIATES