

Front Elevation - House Type B2 (End of Street)

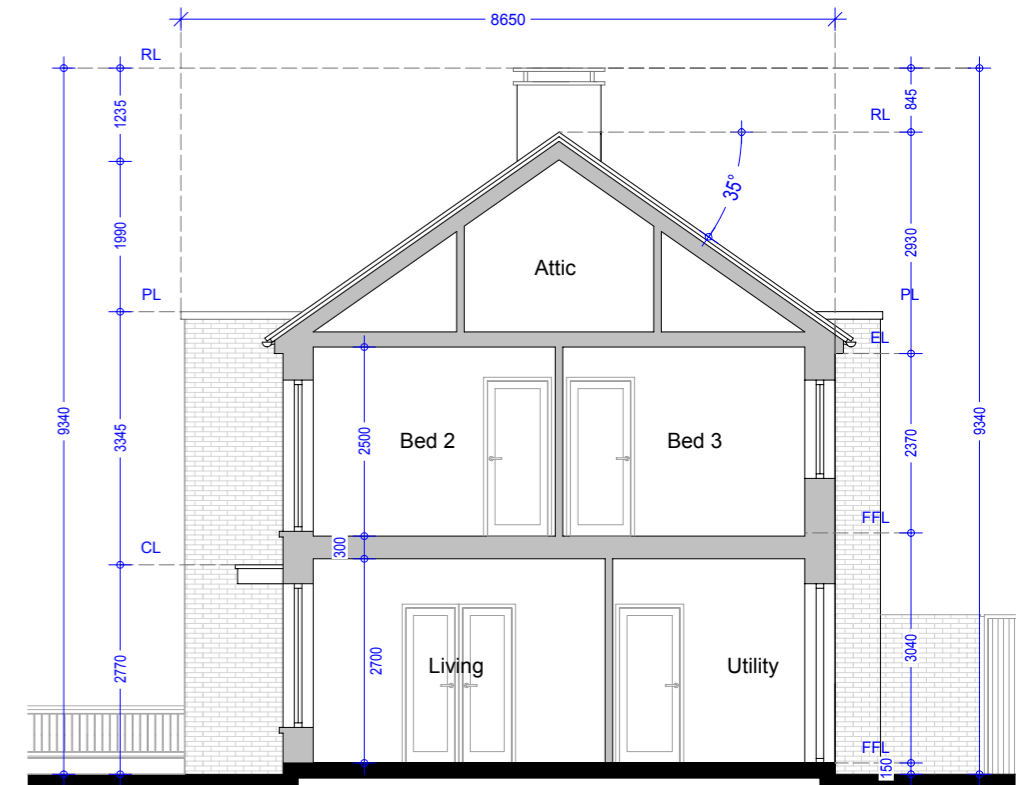
Front Elevation - House Type B1 (End of Street)

House Type B2 (Semi Detached)

No.s 131, 248
 No. 131 has stone feature bay window in lieu of brick.
 See Drg. 992.PL.118 & 992.PL.119 for elevation

House Type B1 (Semi Detached)

No.s 10, 11, 120, 121, 133, 139, 247.
 No.s 139 & 247 have brick feature bay window, the remainder have stone in lieu.
 See Drg. 992.PL.114 & 992.PL.115 for elevation

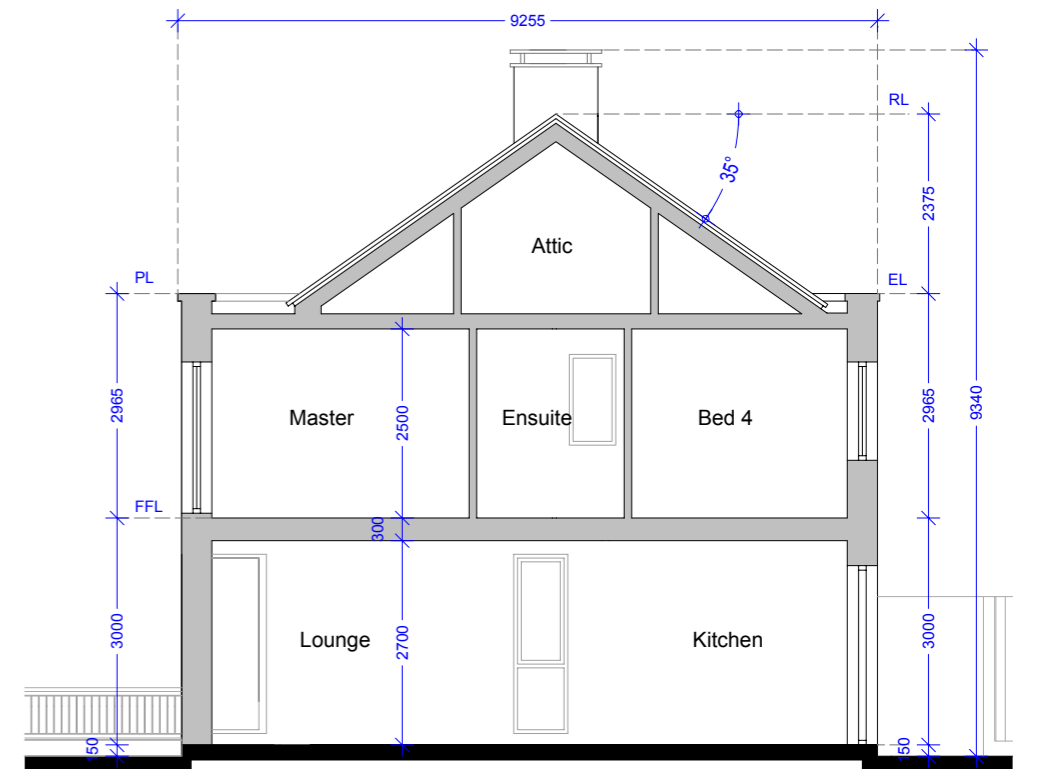


Section AA - House Type B2 (End of Street)



Rear Elevation - House Type B1 (End of Street)

Rear Elevation - House Type B2 (End of Street)



Section BB - House Type B2 (End of Street)

Material Specifications

External Wall - Smooth render painted white - projections will be dark grey brick or natural stone.
Windows - Upvc Double Glazed windows.
External Doors - Aluminium/Timber composite front door.
Roof Finish - Blue/Black Slate.
Rainwater Goods - Pvc - Colour black.

Material Specifications (Continued)

Chimney Caps - Powder coated steel - Colour black.
High Boundary walls - Natural Stone / smooth render painted white / dark grey brick.
Low Boundary walls - Smooth render painted white with limestone cappings and steel railing painted.

Please Refer to north point and finished floor levels in the site layout plan (992.PL.005 Rev 0).

Oldtown, Celbridge, Co. Kildare

House Type B2, B1 - 4 Bed Semi Detached
 Front & Rear Elevations & Sections AA & BB (End of Street)

Drg. 992.PL.122

Dec 2018

Scale 1:100 @ A3



HOGAN ASSOCIATES