

Front Elevation - House Type B - (Mid Street)

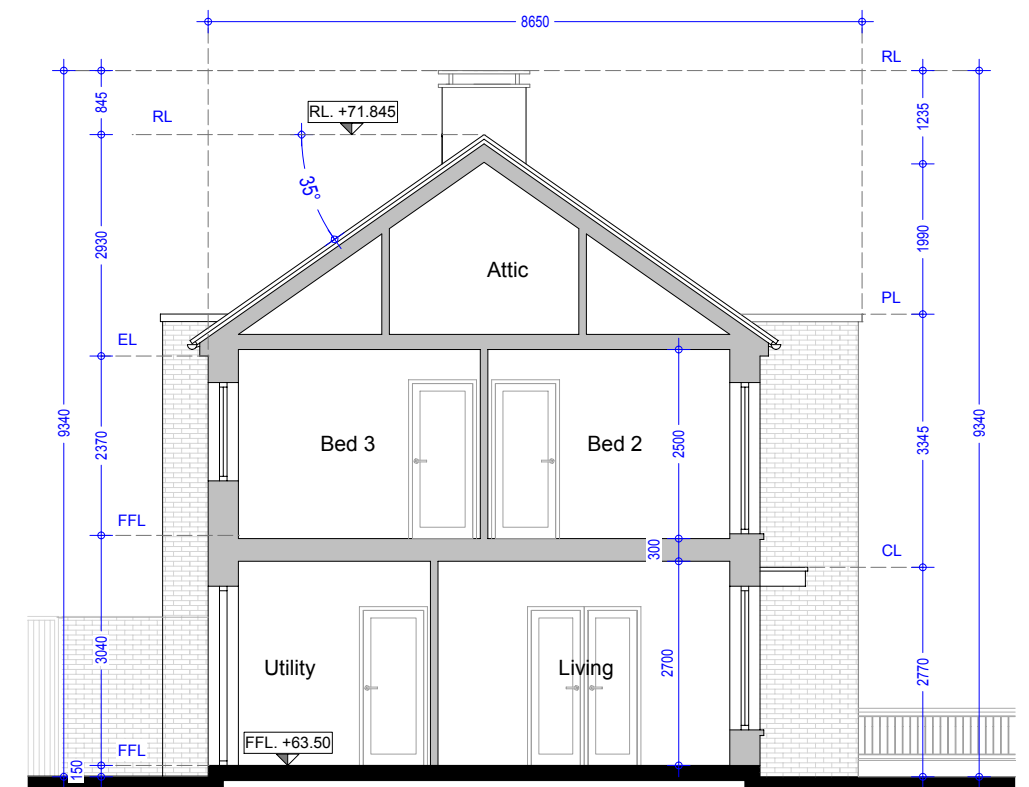
Front Elevation - House Type B3 - (End of Street)

**Type B (Semi Detached)**

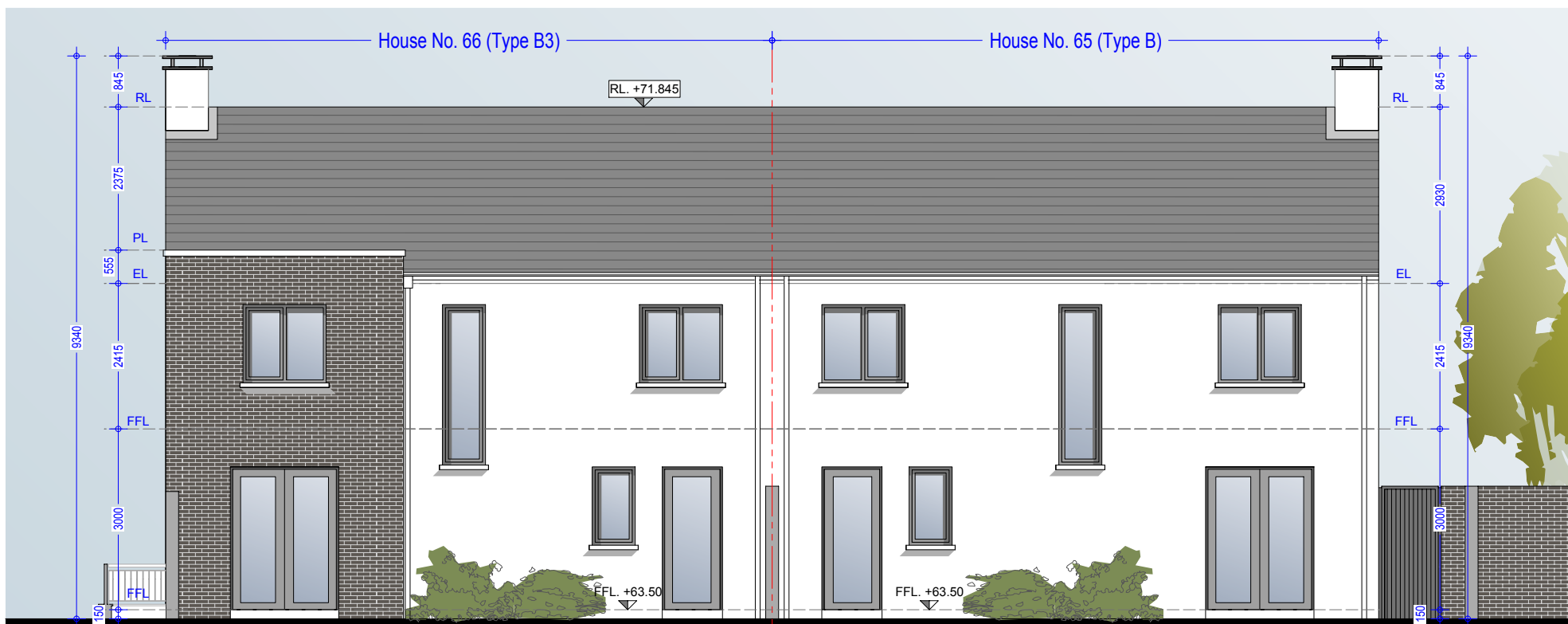
No.s 1-4 Inclusive  
 No's 7, 8, 9, 15, 16, 47, 53, 54, 63, 64, 65, 110, 111, 119, 132, 136, 137, 138, 140, 171, 172, 181, 182.  
 No's 1-4, 7, 8, 9, 132 have stone feature bay window in lieu of brick.  
 See Drg. 992.PL.114 & 992.PL.115 for elevation

**Type B3 - Semi Detached**

House No. 66

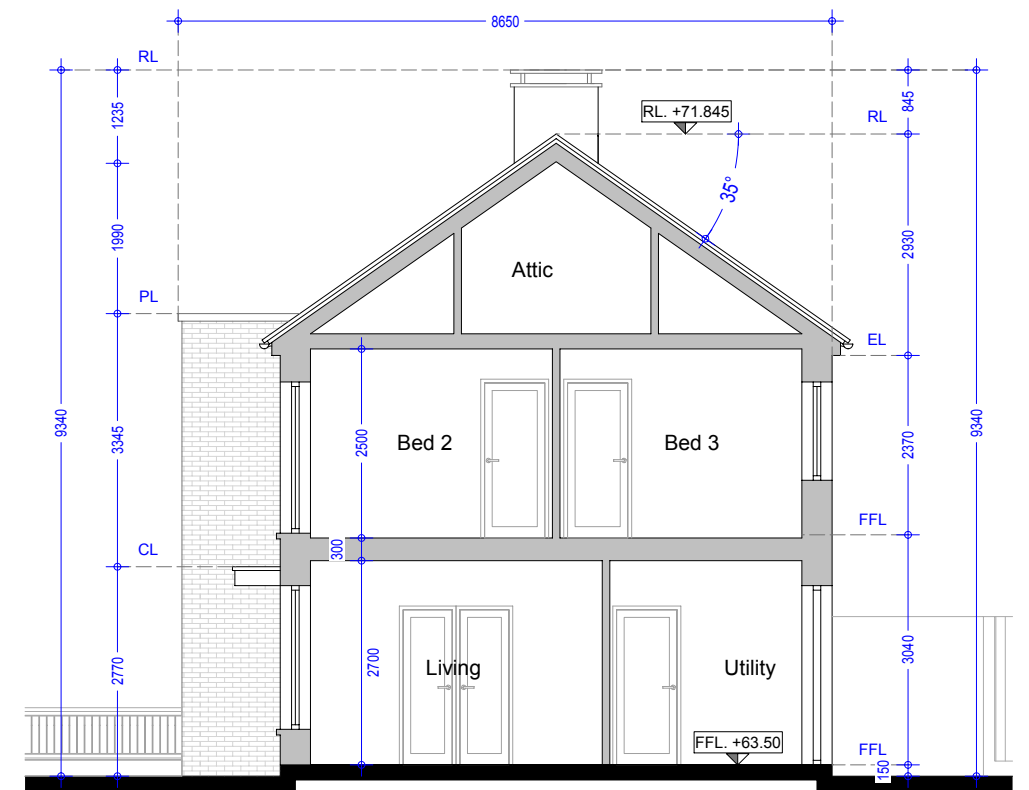


Section AA - House No. 65 - Type B3 (End of Street)



Rear Elevation - House Type B3 - (End of Street)

Rear Elevation - House Type B - (Mid Street)



Section BB - House No. 66 - Type B (Mid Street)

**Material Specifications**

- External Wall** - Smooth render painted white - projections will be dark grey brick or natural stone.
- Windows** - Upvc Double Glazed windows.
- External Doors** - Aluminium/Timber composite front door.
- Roof Finish** - Blue/Black Slate.
- Rainwater Goods** - Pvc - Colour black.

**Material Specifications (Continued)**

- Chimney Caps** - Powder coated steel - Colour black.
- High Boundary walls** - Natural Stone / smooth render painted white / dark grey brick.
- Low Boundary walls** - Smooth render painted white with limestone cappings and steel railing painted.

**Oldtown, Celbridge, Co. Kildare**

House No. 65 & 66 (Type B, B3 - 4 Bed Semi Detached)  
 Front & Rear Elevations & Sections AA & BB  
 (Mid & End of Street)

Drg. 992.PL.126

Dec 2018

Scale 1:100 @ A3



HOGAN ASSOCIATES