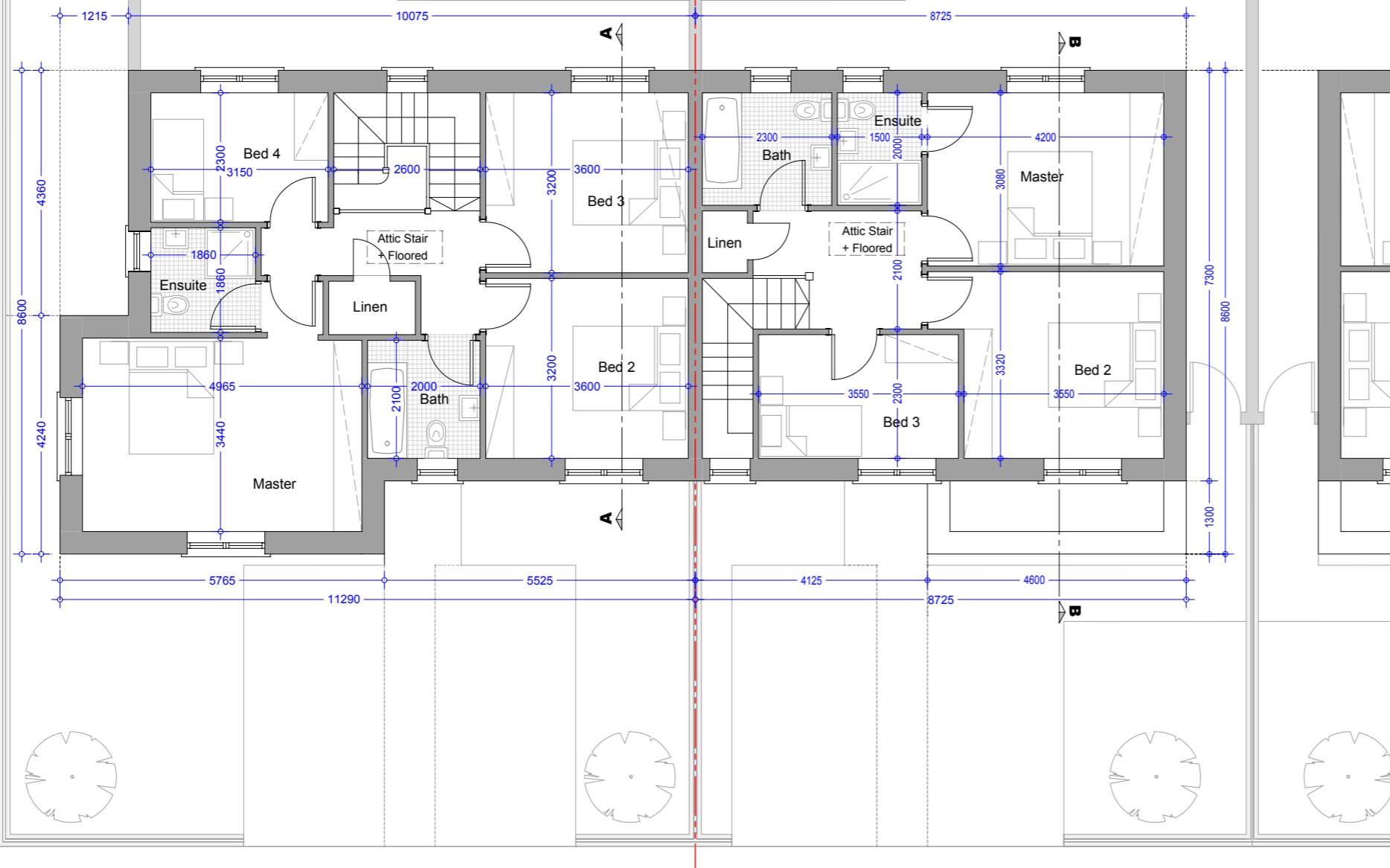


N Please Refer to North Point and finished Floor Levels in the site Layout Plan (992.PL.005 Rev 0).



First Floor Plan - House Type B1 - 4Bed Semi (End of Street)
Area = 71m² / 764 Sqf

First Floor Plan - House Type C (Mid Street)
Area = 53.29 m² / 573.60 Sqf

House Type B1 (Semi Detached)

No.s 10, 11, 120, 121, 133, 139, 247.

No.s 139 & 247 have brick feature bay window, the remainder have stone in lieu.

See Drg. 992.PL.110 & 992.PL.111 for elevation

Type C (Semi Detached)

No's 12, 13, 14, 17, 48, 57, 58, 59, 60, 80, 81, 96, 101, 113, 114, 122, 123, 125, 126, 134, 135, 186, 187.

No's 12, 80, 122, 134, 135 have stone feature bay window, the remainder have brick in lieu.

See Drg. 992.PL.150 & 992.PL.151 for elevation

House Type B1 - 4Bed Semi

Total House Floor Area = 142.13m² / 1529.73 Sqf

Master Bedroom =	16.88 m ² / 181.69 Sqf
Bedroom 02 =	11.51 m ² / 123.89 Sqf
Bedroom 03 =	11.51 m ² / 123.89 Sqf
Bedroom 04 =	7.25 m ² / 76.20 Sqf

House C - 3Bed Semi/Terrace

Total House Floor Area = 111.53 m² / 1200.49 Sqf

Master Bedroom =	13.0 m ² / 133.93 Sqf
Bedroom 02 =	12.44 m ² / 133.90 Sqf
Bedroom 03 =	7.80 m ² / 83.95 Sqf

House Types B1 Storage Areas:

Ground Floor:	
Under Stairs Store =	1.5 m ² / 16.1 Sqf
Utility =	4.6 m ² / 49.5 Sqf
First Floor:	
Store =	1.4 m ² / 15.0 Sqf
Attic Storage	
(Stira Stair + Floored) =	5.0 m ² / 53.8 Sqf
Total Storage Area =	12.5 m² / 134.5 Sqf

House Type C - Storage Areas:

Ground Floor:	
Utility =	2.76 m ² / 29.7 Sqf
Under Stair =	1.35 m ² / 14.5 Sqf
First Floor:	
Store =	0.7 m ² / 7.5 Sqf
Attic Storage	
(Stira Stair+Floored) =	5.0 m ² / 53.8 Sqf
Total Storage Area =	9.81 m² / 105.5 Sqf

Oldtown, Celbridge, Co. Kildare

House Type B1, C - 4 Bed Semi Detached
First Floor Plan (Mid and End of Street)

Drg. 992.PL.129

Dec 2018

Scale 1:100 @ A3



HOGAN ASSOCIATES