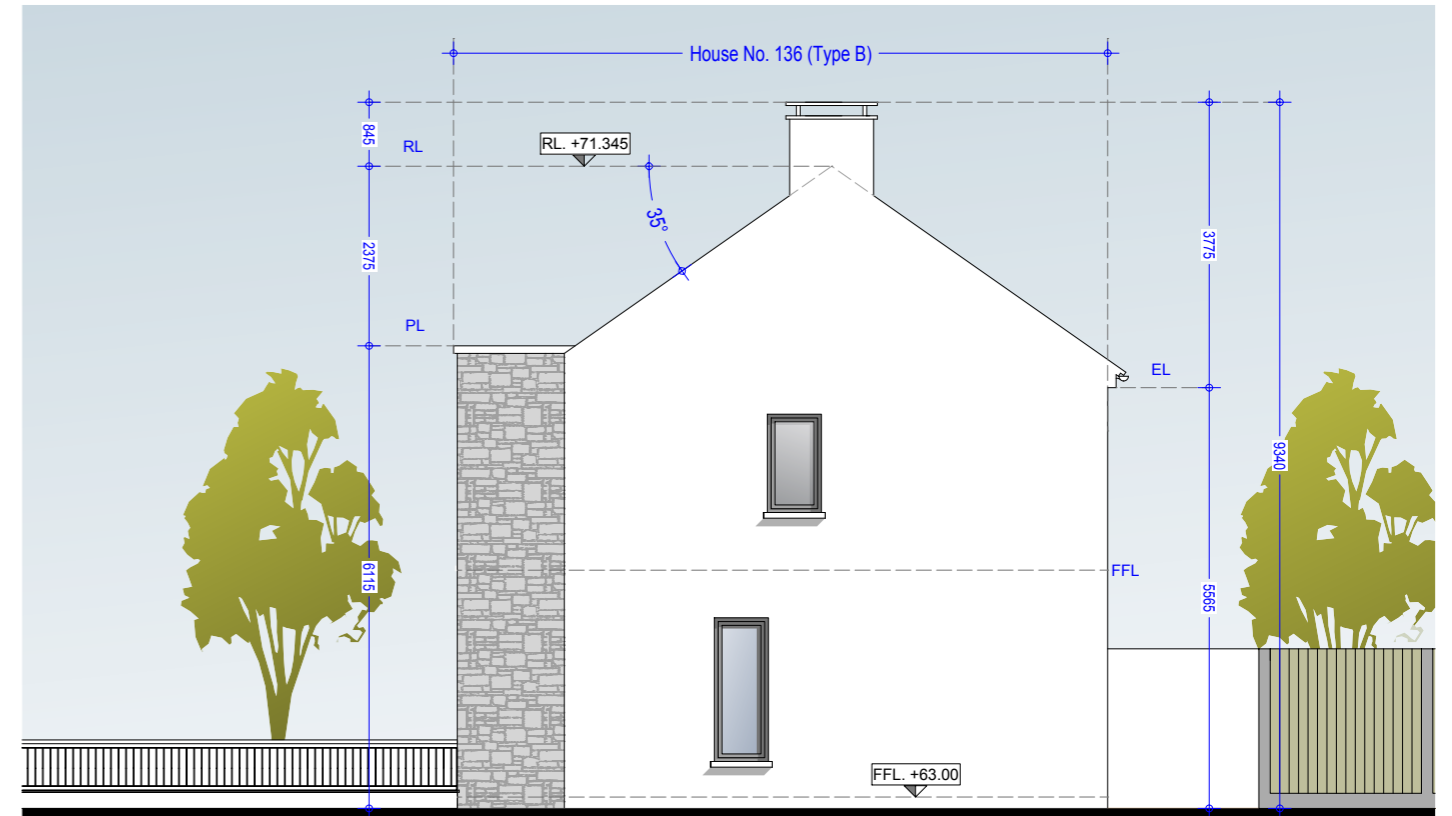


Side Elevation 01 - House Type C (Mid Street)



Side Elevation 02 - House Type B (Mid Street)

Type C (Semi Detached)

No's 12, 13, 14, 17, 48, 57, 58, 59, 60, 80, 81, 96,
101, 113, 114, 122, 123, 125, 126, 134, 135, 186, 187.
No's 12, 80, 122, 134, 135 have stone feature bay window,
the remainder have brick in lieu.
See Drg. 992.PL.150 & 992.PL.151 for elevation

Type B (Semi Detached)

No.s 1-4 Inclusive
No's 7, 8, 9, 15, 16, 47, 53, 54, 63, 64, 65, 110, 111,
119, 132, 136, 137, 138, 140, 171, 172, 181, 182.
No's 1-4, 7, 8, 9, 132 have stone feature bay window,
the remainder have brick in lieu.
See Drg. 992.PL.106 & 992.PL.107 for elevation

Material Specifications

External Wall - Smooth render painted white - projections will be dark grey brick or natural stone.
Windows - Upvc Double Glazed windows.
External Doors - Aluminium/Timber composite front door.
Roof Finish - 'Rivendale' Blue/Black Slate.
Rainwater Goods - Pvc - Colour black.

Material Specifications (Continued)

Chimney Caps - Powder coated steel - Colour black.
High Boundary walls - Natural Stone / smooth render painted white / dark grey brick.
Low Boundary walls - Smooth render painted white with limestone cappings and steel railing painted.

Oldtown, Celbridge, Co. Kildare

House No. 135 & 136 - Type C,B - 3 Bed Semi Detached
Side Elevations (Mid Street)

Drg. 992.PL.143

Dec 2018

Scale 1:100 @ A3

HOGAN
ARCHITECTURE
URBAN DESIGN

HOGAN ASSOCIATES