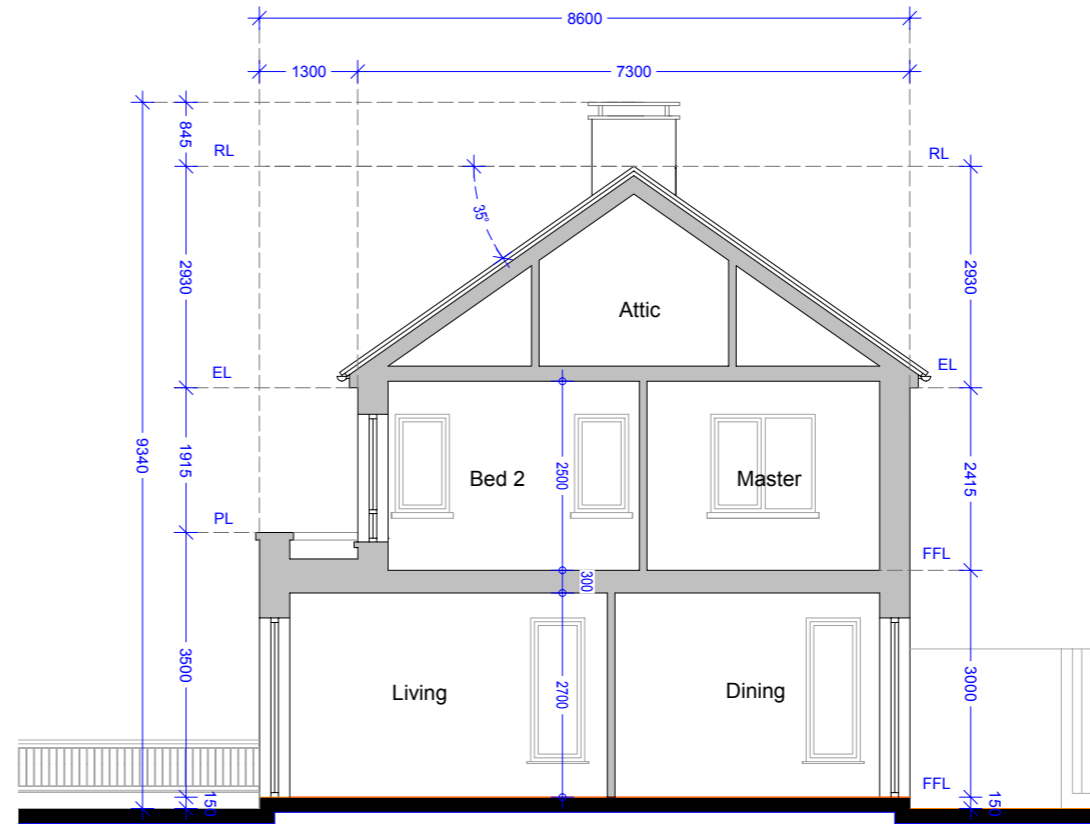
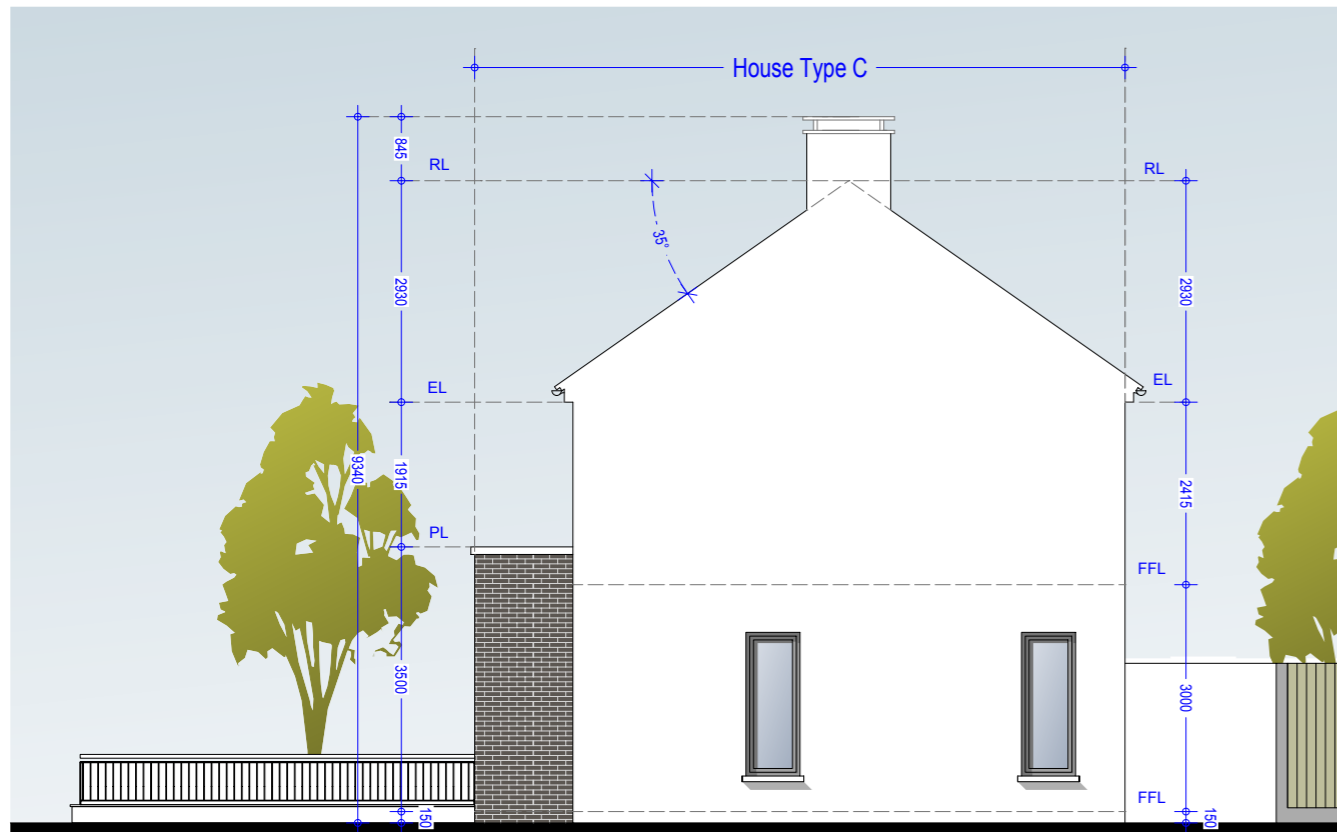


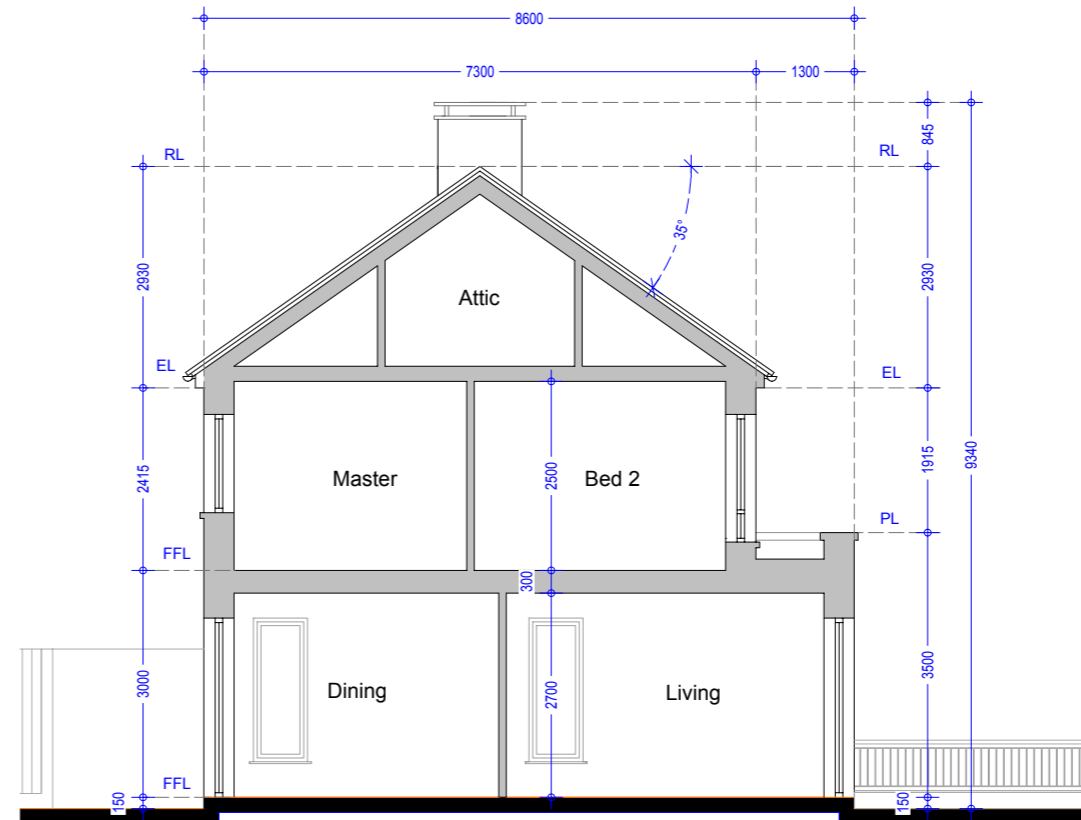
Side Elevation 01 - House Type C (End of Street)



Section AA - House Type C3 (End of Street)



Side Elevation 02 - House Type C (Mid Street)



Section BB - House Type C (Mid Street)

**Type C (Semi Detached)**

No's 12, 13, 14, 17, 48, 57, 58, 59, 60, 80, 81, 96, 101, 113, 114, 122, 123, 125, 126, 134, 135, 186, 187.

No's 12, 80, 122, 134, 135 have stone feature bay window in lieu of brick.

See Drg. 992.PL.134 & 992.PL.135 for elevation

**Type C3 - Semi Detached**

No's 95, 185, 188, 95

**Material Specifications**

**External Wall** - Smooth render painted white - projections will be dark grey brick or natural stone.

**Windows** - Upvc Double Glazed windows.

**External Doors** - Aluminium/Timber composite front door.

**Roof Finish** - Blue/Black Slate.

**Rainwater Goods** - Pvc - Colour black.

**Material Specifications (Continued)**

**Chimney Caps** - Powder coated steel - Colour black.

**High Boundary walls** - Natural Stone / smooth render painted white / dark grey brick.

**Low Boundary walls** - Smooth render painted white with limestone cappings and steel railing painted.

Please Refer to north point and finished floor levels in the site layout plan (992.PL.005 Rev 0).

**Oldtown, Celbridge, Co. Kildare**

**House Type C3,C - 3 Bed Semi Detached**

**Side Elevations & Section AA & BB**

**(Mid & End of Street)**

Drg. 992.PL.147

Dec 2018

Scale 1:100 @ A3



HOGAN ASSOCIATES