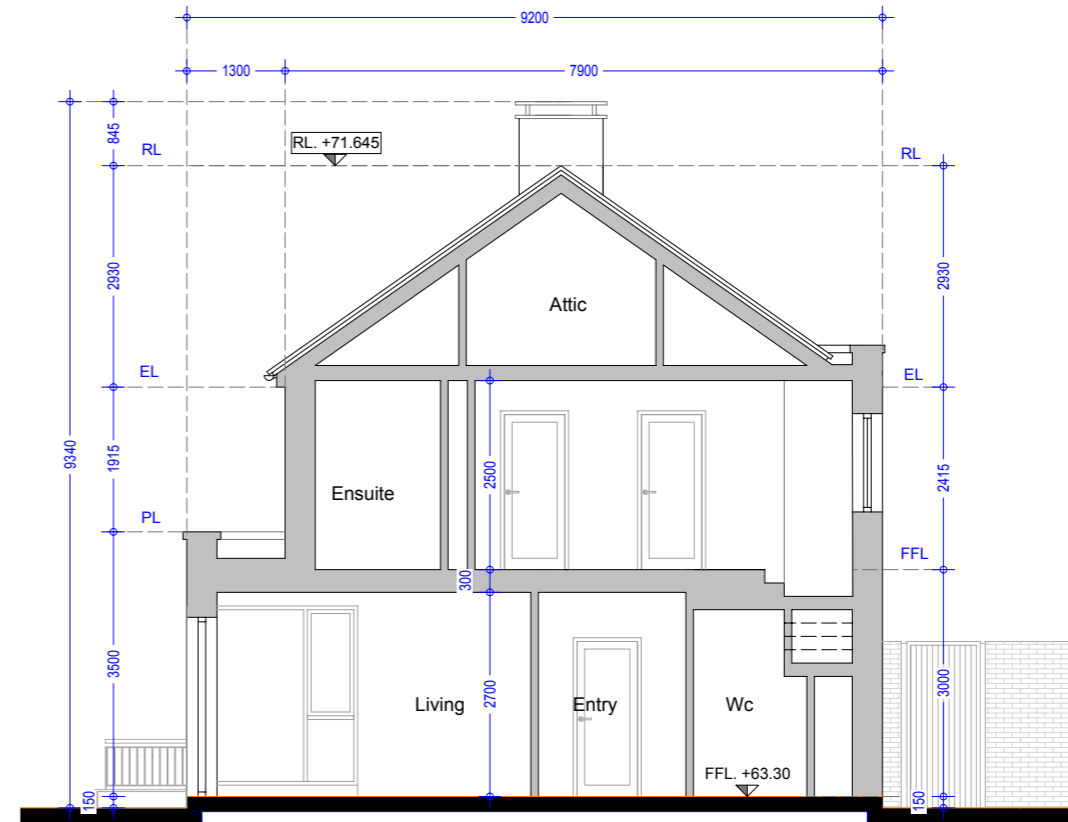
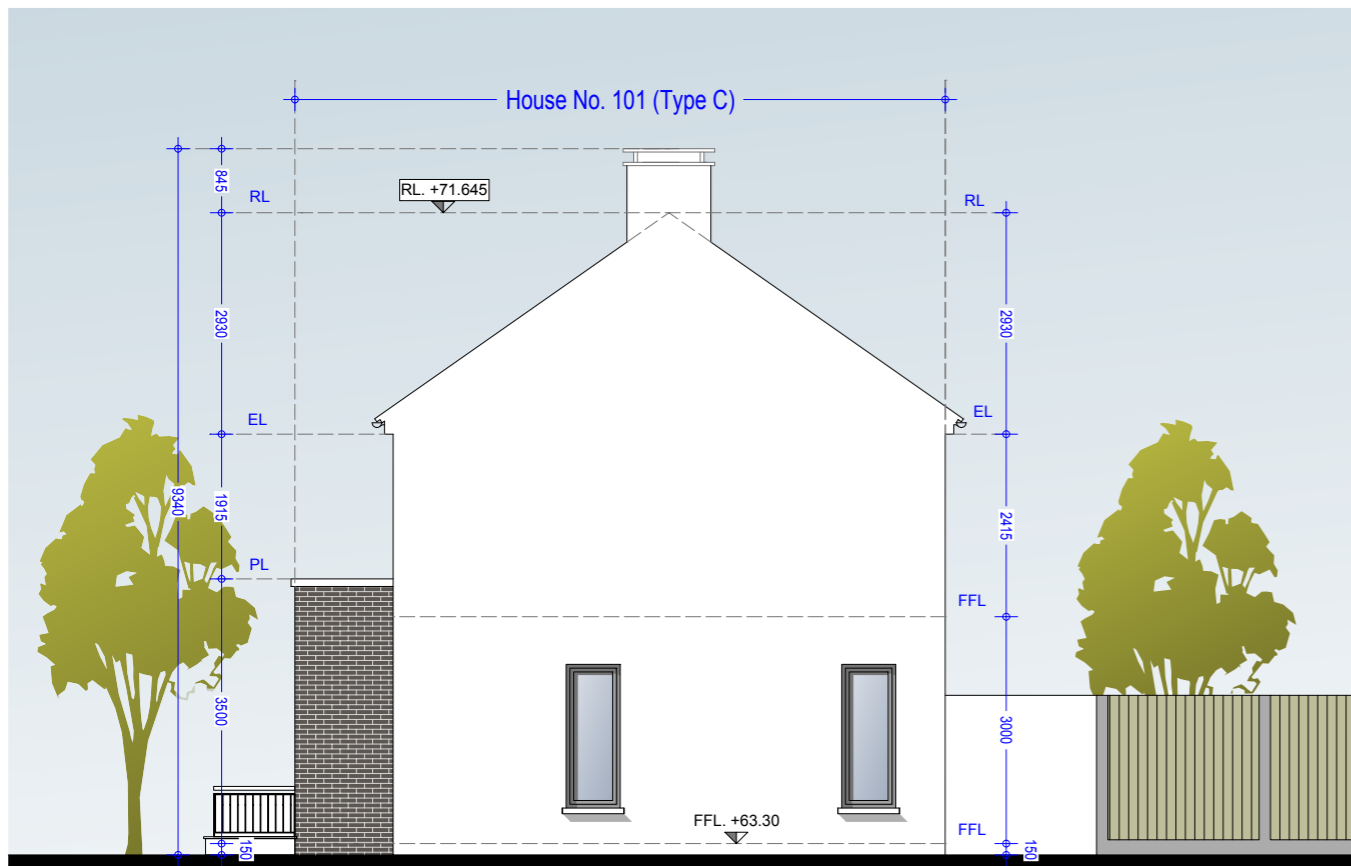


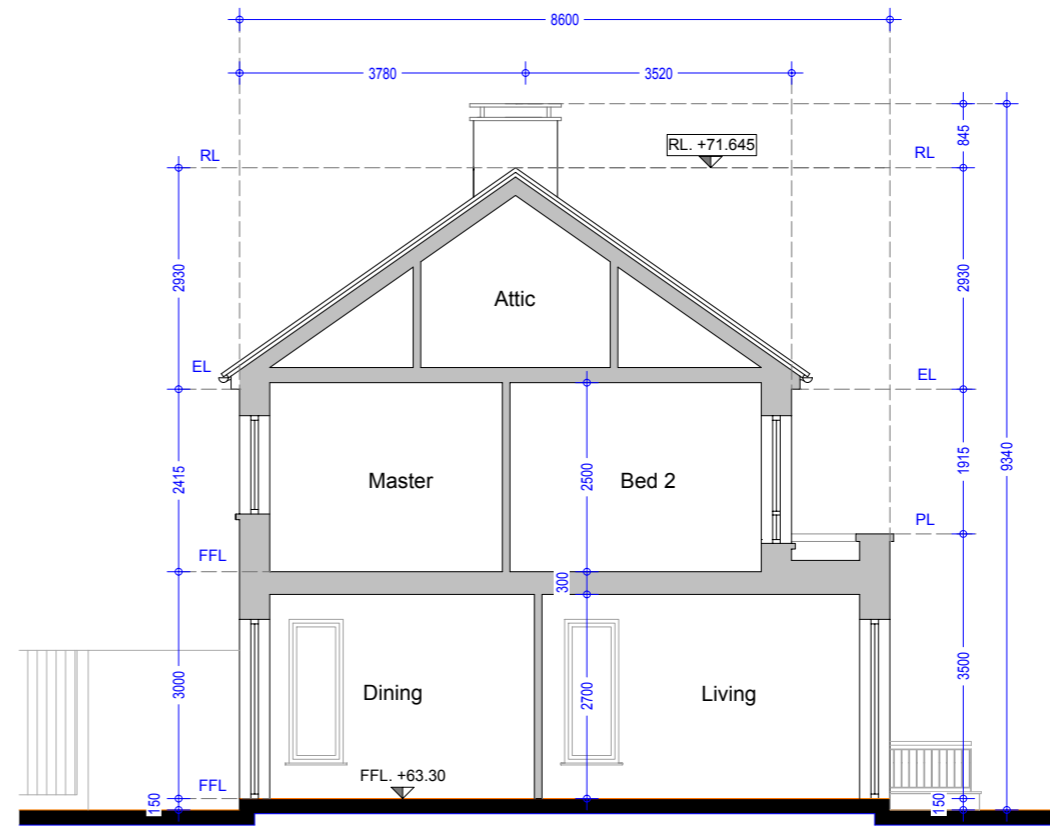
Side Elevation 01 - House Type C2 (End of Street)



Cross Section AA - House No. 100 - Type C2 (End of Street)



Side Elevation 02 - House Type C (Mid Street)



Section BB - House No 101 - Type C (Mid Street)

Type C (Semi Detached)
 No's 12, 13, 14, 17, 48, 57, 58, 59, 60, 80, 81, 96,
 101, 113, 114, 122, 123, 125, 126, 134, 135, 186, 187.
 No's 12, 80, 122, 134, 135 have stone feature
 bay window in lieu of brick.
 See Drg. 992.PL.134 & 992.PL.135 for elevation

Type C2 (Semi Detached)
 No. 100

Material Specifications

External Wall - Smooth render painted white - projections will be dark grey brick or natural stone.
Windows - Upvc Double Glazed windows.
External Doors - Aluminium/Timber composite front door.
Roof Finish - Blue/Black Slate.
Rainwater Goods - Pvc - Colour black.

Material Specifications (Continued)

Chimney Caps - Powder coated steel - Colour black.
High Boundary walls - Natural Stone / smooth render painted white / dark grey brick.
Low Boundary walls - Smooth render painted white with limestone cappings and steel railing painted.

Oldtown, Celbridge, Co. Kildare

House No. 100 & 101 - Type C2,C - 3 Bed Semi Detached
 Side Elevations & Section AA & BB

Drg. 992.PL.167

Dec 2018

Scale 1:100 @ A3



HOGAN ASSOCIATES