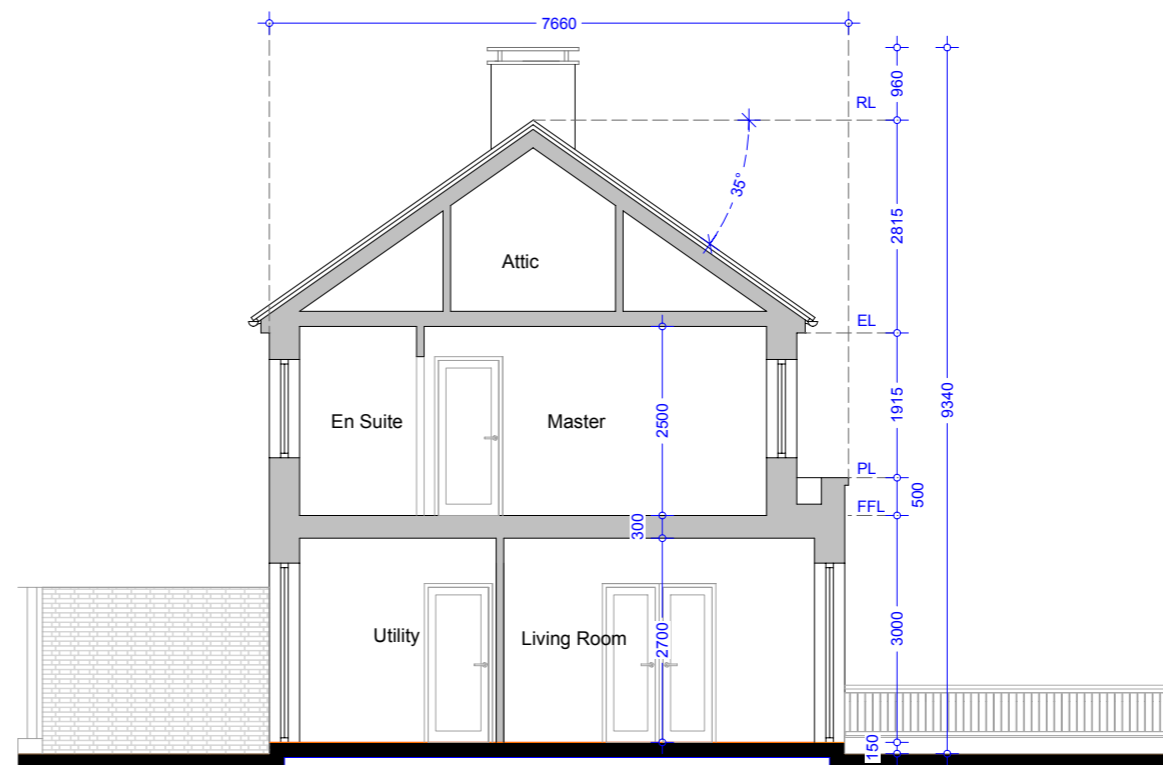
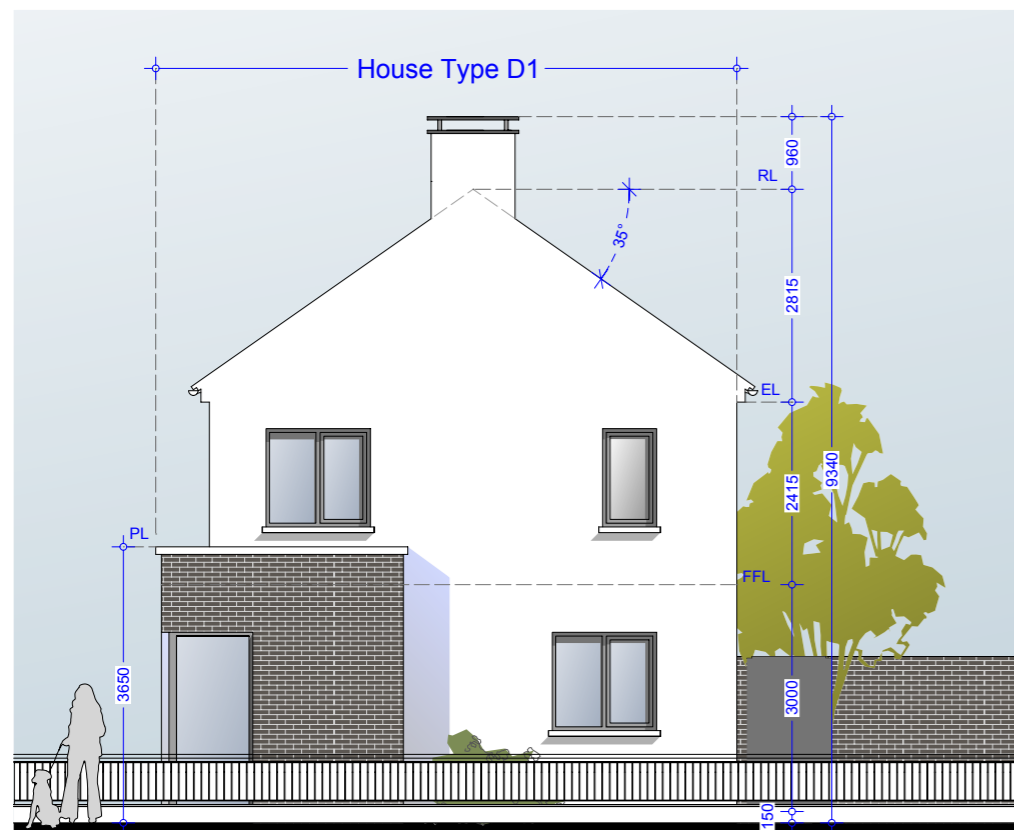


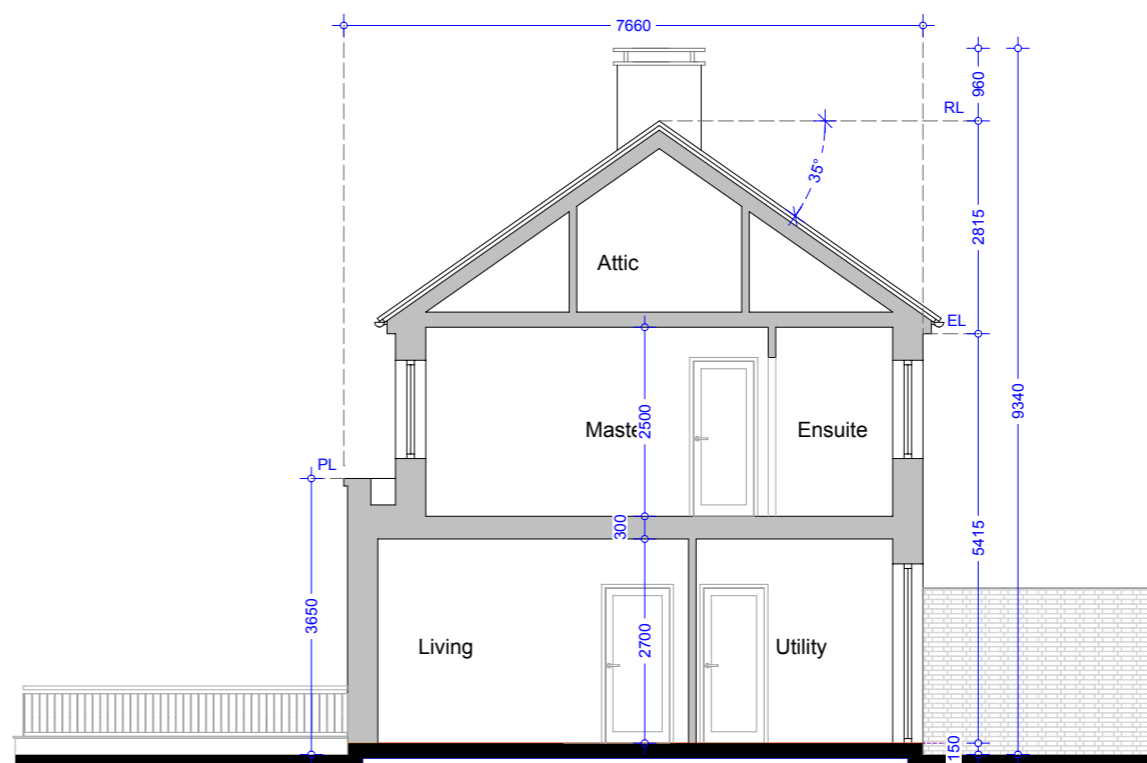
Side Elevation 01 - House Type D (Mid Street)



Section AA - House Type D (Mid Street)



Side Elevation 02 - House Type D1 (End of Street)



Section BB - House Type D1 (End of Street)

Type D (Semi Detached)

No's 5, 6, 43, 44, 45, 46, 49, 50, 51, 52, 103, 106, 107, 141, 142, 169, 179, 180
No's 5 & 6 have stone feature bay window in lieu of brick.

Type D1 (Semi Detached)

No's 102 & 170

Material Specifications

- External Wall** - Smooth render painted white - projections will be dark grey brick or natural stone.
- Windows** - Upvc Double Glazed windows.
- External Doors** - Aluminium/Timber composite front door.
- Roof Finish** - Blue/Black Slate.
- Rainwater Goods** - Pvc - Colour black.

Material Specifications (Continued)

- Chimney Caps** - Powder coated steel - Colour black.
- High Boundary walls** - Natural Stone / smooth render painted white / dark grey brick.
- Low Boundary walls** - Smooth render painted white with limestone cappings and steel railing painted.

Please Refer to north point and finished floor levels in the site layout plan (992.PL.005 Rev 0).

Oldtown, Celbridge, Co. Kildare

House Type D, D1 - 3 Bed Semi Detached
Side Elevations & Sections AA & BB

Drg. 992.PL.175

Dec 2018

Scale 1:100 @ A3



HOGAN ASSOCIATES