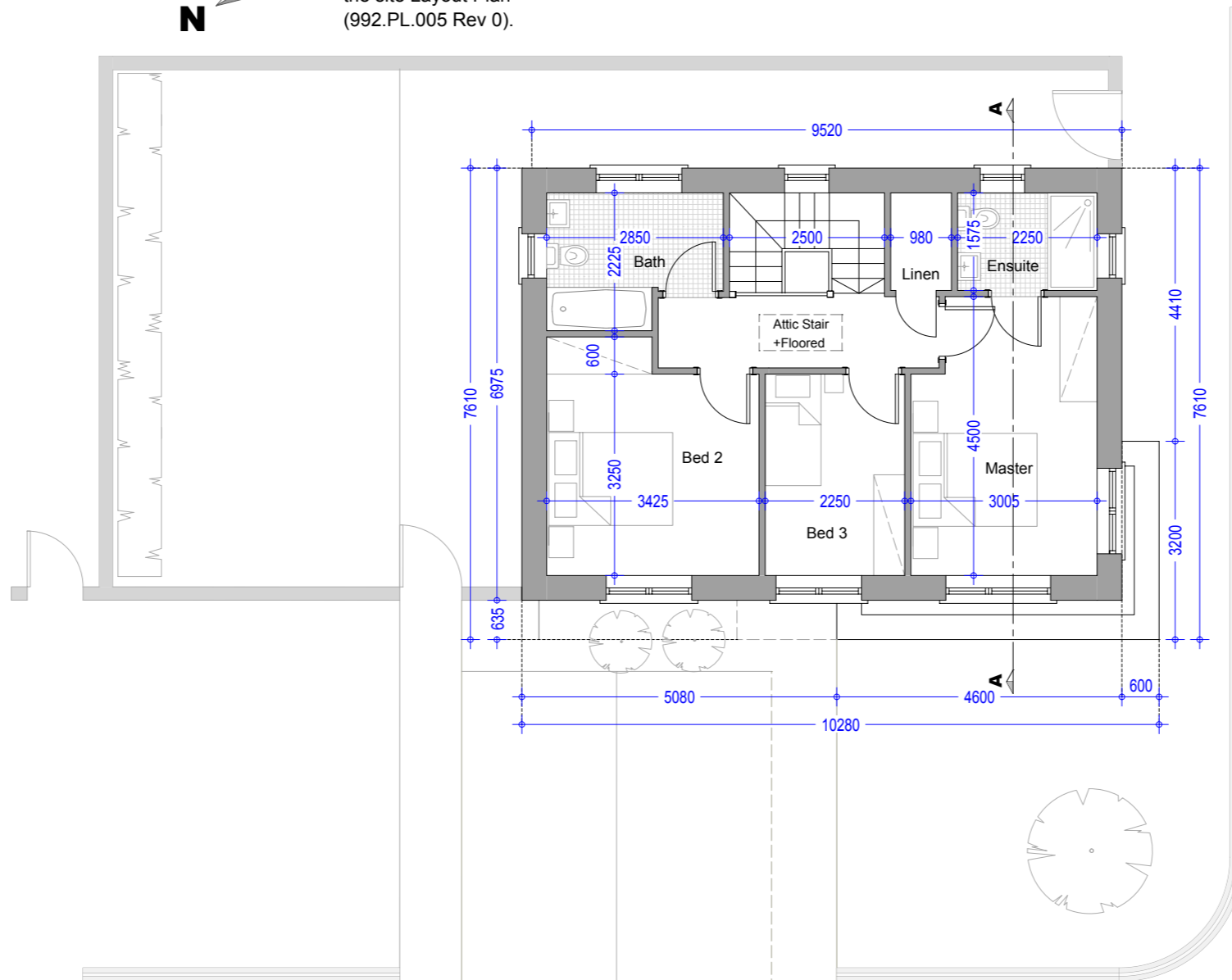




Please Refer to North Point
and finished Floor Levels in
the site Layout Plan
(992.PL.005 Rev 0).



First Floor Plan - House D1 - 3Bed Detached
Area = 54.64 m2 / 588.14 sqf

Type D1 (Detached)
No's 42 & 112

House Type D1 - 3Bed Detached

Total House Floor Area = 113.51 m2 / 1221.81 Sqf

- Master Bedroom = 12.82 m2 / 137.99 Sqf
- Bedroom 02 = 11.14 m2 / 119.91 Sqf
- Bedroom 03 = 7.31 m2 / 78.68 Sqf

House Type D1 Storage Area:

- Ground Floor Area**
- Utility = 4.21 m2 / 45.31 sqf
- Store 01 = 1.19 m2 / 12.81 sqf
- First Floor Area**
- Linen = 1.54 m2 / 16.57 Sqf
- Store 02 = 2.99 m2 / 32.18 Sqf
- Attic Storage Area**
- (Stira Stair+Floored) = 5.0 m2 / 53.81 sqf
- Total Storage Area = 14.93 m2 / 160.70 sqf

Oldtown, Celbridge, Co. Kildare

House Type D1 - 3 Bed Detached
First Floor Plan

Drg. 992.PL.177

Dec 2018

Scale 1:100 @ A3



HOGAN ASSOCIATES