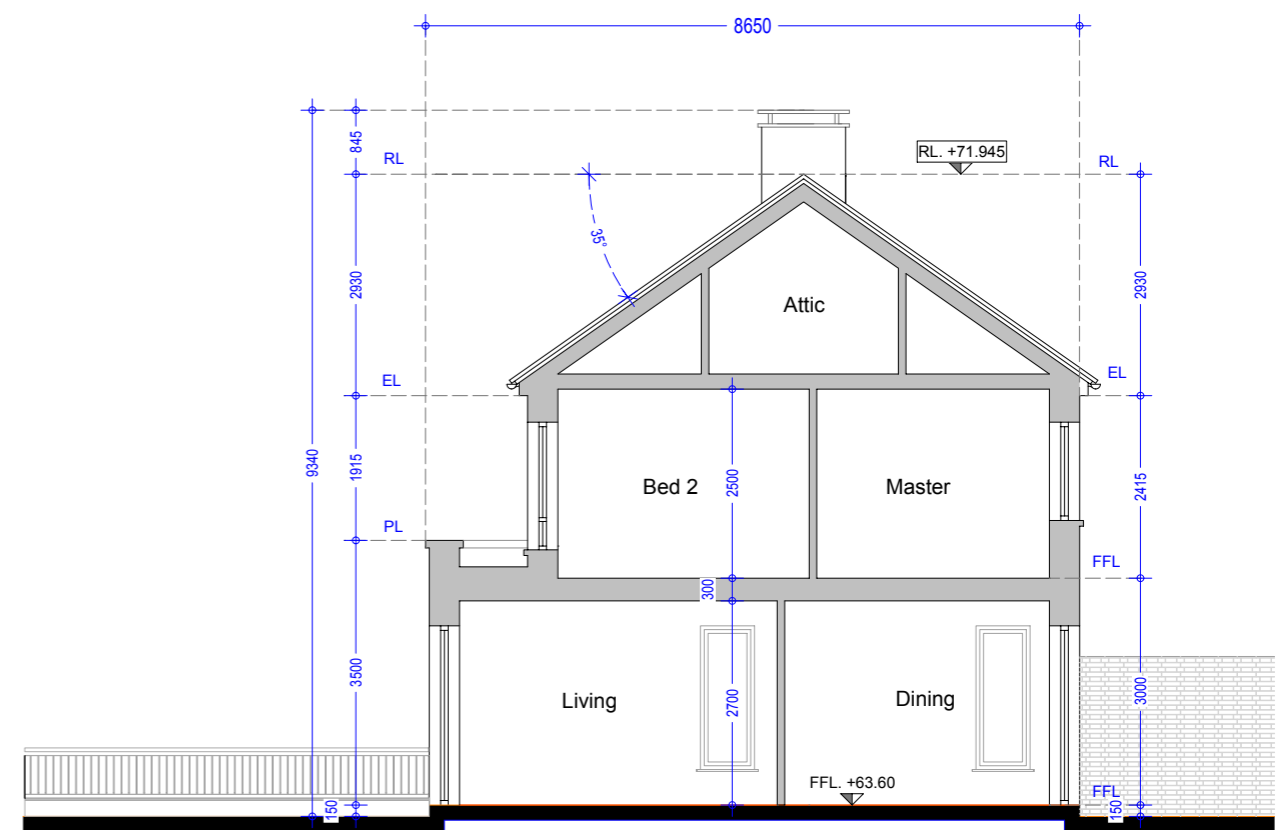
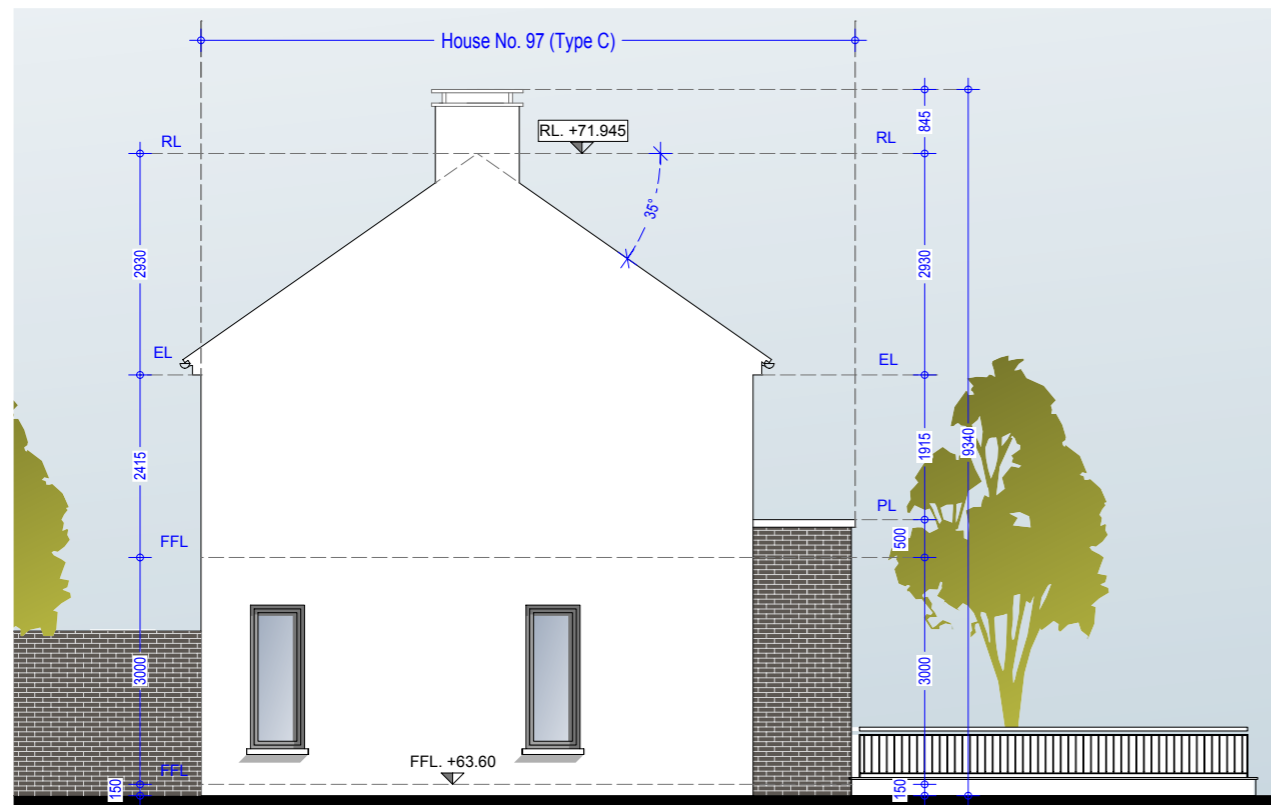


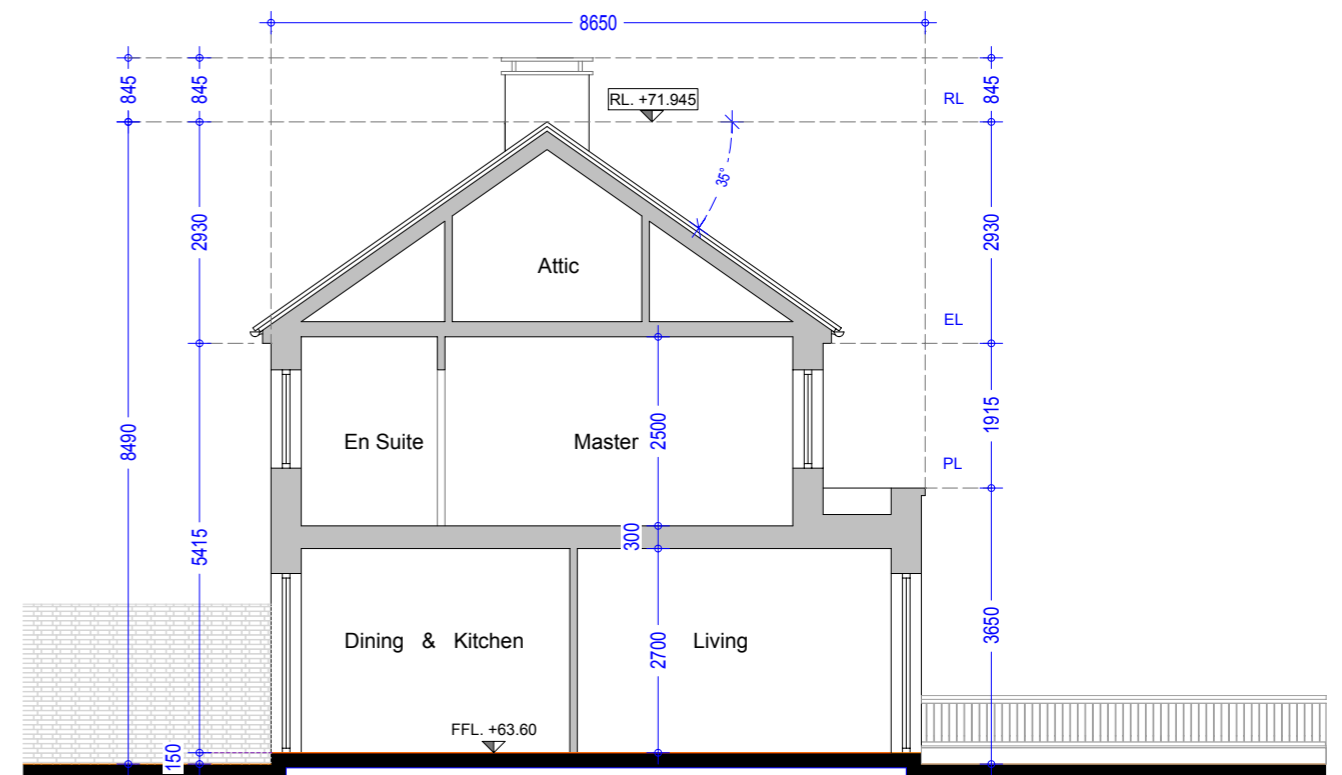
Side Elevation 02 - House Type F



Section A-A - House No. 97 - Type C (End of Street)



Side Elevation 01 - House Type C (End of Street)



Section B-B - House - No.99 - Type F

Material Specifications

- External Wall** - Smooth render painted white - projections will be dark grey brick or natural stone.
- Windows** - Upvc Double Glazed windows.
- External Doors** - Aluminium/Timber composite front door.
- Roof Finish** - Blue/Black Slate.
- Rainwater Goods** - Pvc - Colour black.

Material Specifications (Continued)

- Chimney Caps** - Powder coated steel - Colour black.
- High Boundary walls** - Natural Stone / smooth render painted white / dark grey brick.
- Low Boundary walls** - Smooth render painted white with limestone cappings and steel railing painted.

Oldtown, Celbridge, Co. Kildare

House No 97-99 - Type C, F, F (3 bed, 2 bed, 2 bed)
Side Elevations & Sections

Drg. 992.PL.201

Dec 2018

Scale 1:100 @ A3



HOGAN ASSOCIATES