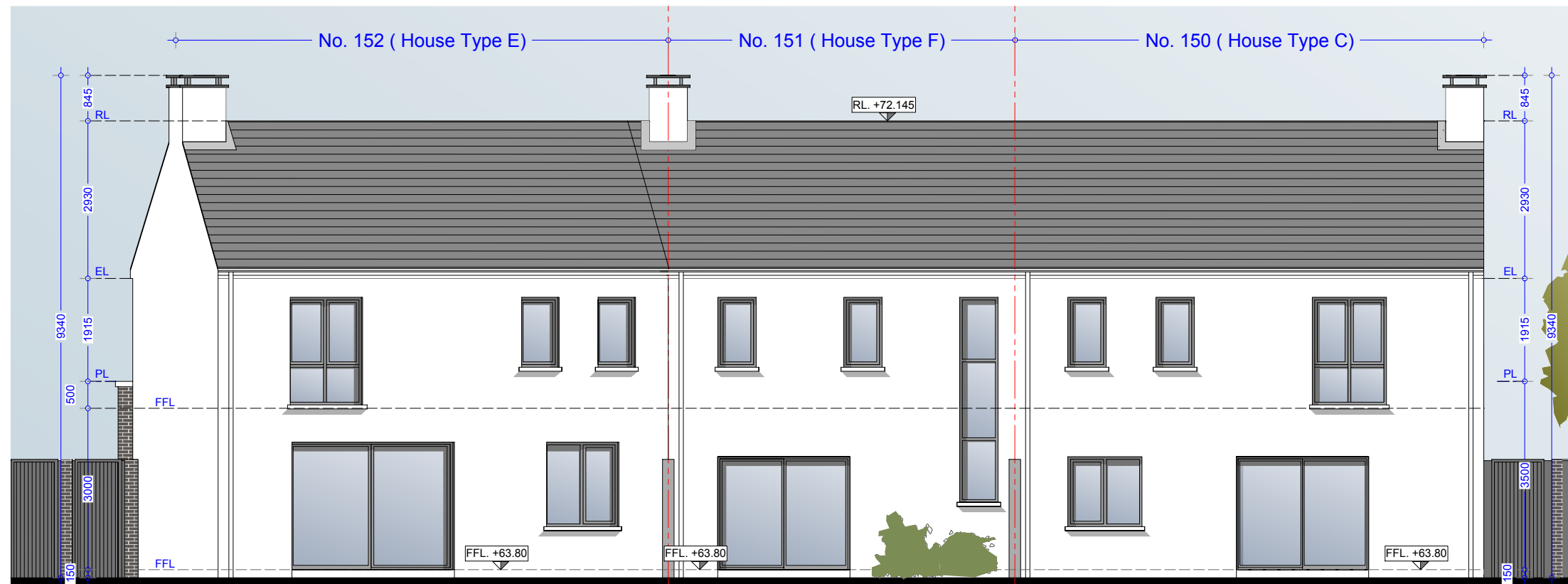


Front Elevation - House Type C (End of Terrace)

Front Elevation - House Type F (Mid Terrace)

Front Elevation House Type E (End of Terrace)



Rear Elevation - House Type E (End of Terrace)

Rear Elevation - House Type F (Mid Terrace)

Rear Elevation - House Type C (End of Terrace)

Material Specifications

- External Wall** - Smooth render painted white - projections will be dark grey brick or natural stone.
- Windows** - Upvc Double Glazed windows.
- External Doors** - Aluminium/Timber composite front door.
- Roof Finish** - Blue/Black Slate.
- Rainwater Goods** - Pvc - Colour black.

Material Specifications (Continued)

- Chimney Caps** - Powder coated steel - Colour black.
- High Boundary walls** - Natural Stone / smooth render painted white / dark grey brick.
- Low Boundary walls** - Smooth render painted white with limestone cappings and steel railing painted.

Oldtown, Celbridge, Co. Kildare

House No.s 150-152 - Type C,F & E Terrace
Front & Rear Elevations

Drg. 992.PL.216

Dec 2018

Scale 1:100 @ A3



HOGAN ASSOCIATES