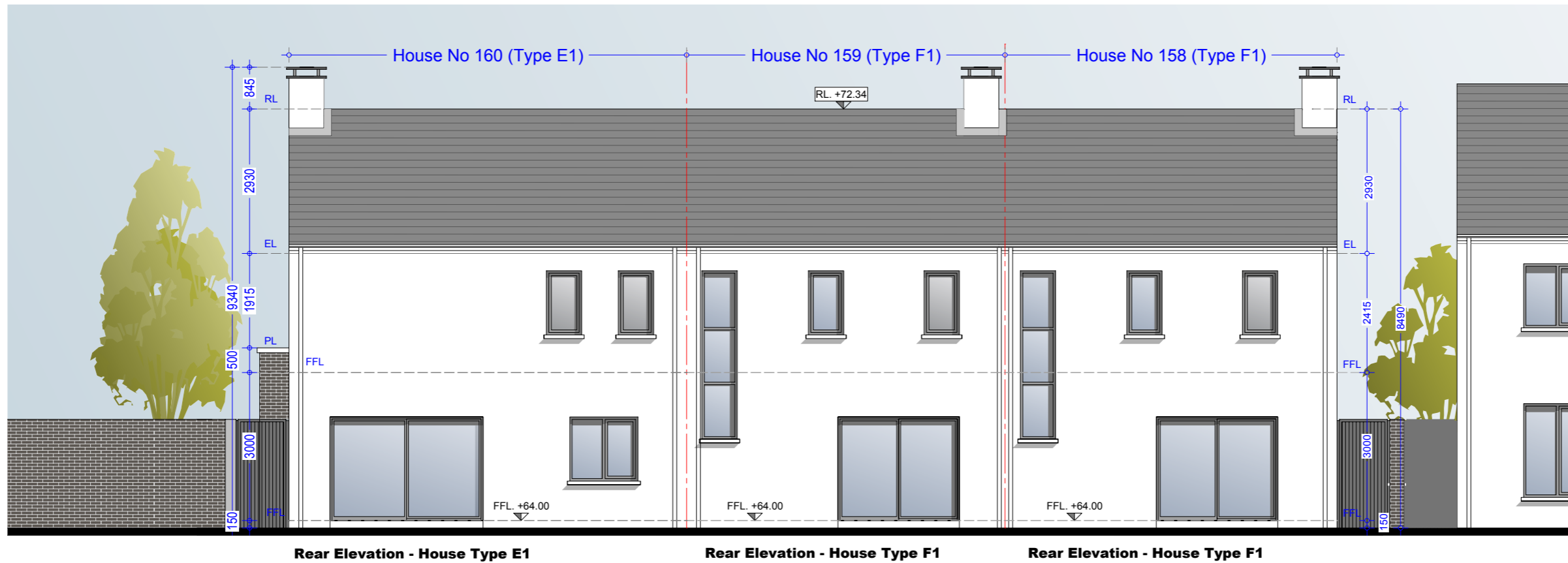


Front Elevation - House Type F1

Front Elevation - House Type F1

Front Elevation - House Type E1



Rear Elevation - House Type E1

Rear Elevation - House Type F1

Rear Elevation - House Type F1

**Material Specifications**

- External Wall** - Smooth render painted white - projections will be dark grey brick or natural stone.
- Windows** - Upvc Double Glazed windows.
- External Doors** - Aluminium/Timber composite front door.
- Roof Finish** - Blue/Black Slate.
- Rainwater Goods** - Pvc - Colour black.

**Material Specifications (Continued)**

- Chimney Caps** - Powder coated steel - Colour black.
- High Boundary walls** - Natural Stone / smooth render painted white / dark grey brick.
- Low Boundary walls** - Smooth render painted white with limestone cappings and steel railing painted.

**Oldtown, Celbridge, Co. Kildare**

House No. 158 - 160 - Type F1, F1, E1 (2 bed, 2 bed, 3 bed)  
Front & Rear Elevation

Drg. 992.PL.220

Dec 2018

Scale 1:100 @ A3



HOGAN ASSOCIATES