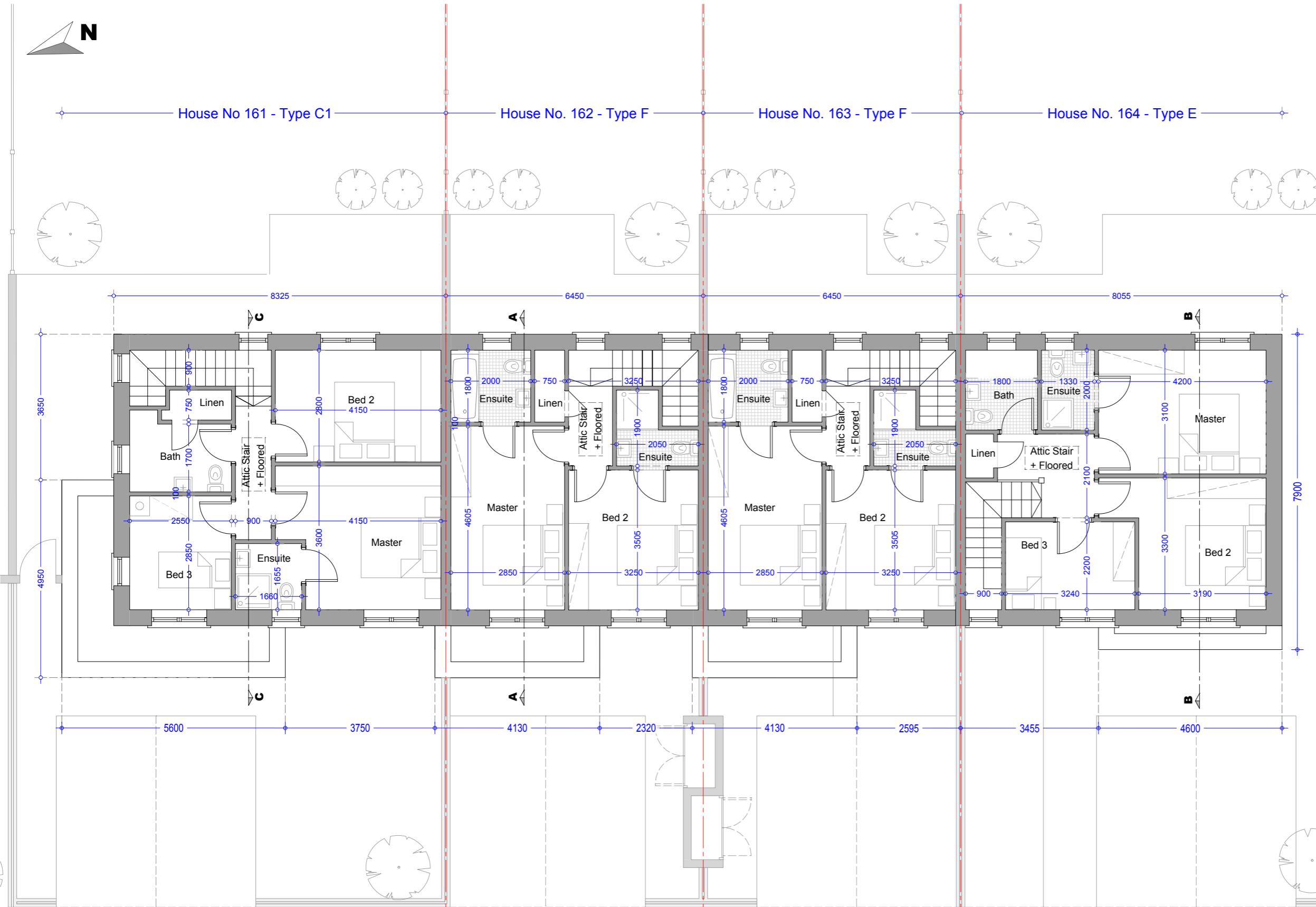


House No 161 - Type C1

House No. 162 - Type F

House No. 163 - Type F

House No. 164 - Type E



First Floor Plan - House C1 - 3Bed End of Terrace
Area = 50.69 m2 / 542.62 sqf

**First Floor Plan - House F
2Bed Mid Terrace**
Area = 40.33 m2 / 434.11 sqf

**First Floor Plan - House F
2Bed Mid Terrace**
Area = 40.33 m2 / 434.11 sqf

First Floor Plan - House E - 3Bed End of Terrace
Area = 48.94 m2 / 526.79 sqf

House C1 - 3 Bed
Total House Floor Area = 110.83 m2 / 1193.0 sqf
Master Bedroom = 13.6 m2 / 146.3 Sqf
Bedroom 02 = 11.6 m2 / 124.8 Sqf
Bedroom 03 = 7.18 m2 / 77.0 Sqf

House F - 2Bed Terrace
Total House Floor Area = 84.99 m2 / 914.82 sqf
Master Bedroom = 13.1 m2 / 141.0 sqf
Bedroom 02 = 11.4 m2 / 121.6 sqf

House Type E - 3Bed Terrace
Total House Floor Area = 100 Sq.m / 1076.39 sqf
Master Bedroom = 13.0 Sq.M / 140.0 Sq.F
Bedroom 02 = 11.4 Sq.M / 122.7 Sq.F
Bedroom 03 = 7.1 Sq.M / 76.4 Sq.F

House Type C1 - 3Bed Terrace
Ground Floor Storage Area
Utility = 2.76 m2 / 29.7 Sqf
Under Stair = 1.35 m2 / 14.5 Sqf
First Floor Storage Area
Store = 1.2 m2 / 13.0 Sqf
Attic Storage
(Stira Stair + Floored) = 5.0 m2 / 53.8 Sqf
Total Storage Area = 10.3 m2 / 110.8 Sqf

House Type F - 2Bed Terrace
Ground Floor Storage Area
Store Under Stairs = 4.1 m2 / 44 sqf
First Floor Storage Area
Store = 1.3 m2 / 14.0 sqf
Attic Storage
(Stira Stair + Floored) = 5.0 m2 / 53.8 sqf
Total Storage Area = 10.4 m2 / 111.9 sqf

House Type E - 3Bed Terrace
Ground Floor Storage Area
Utility = 2.4 Sq.M / 25.8 Sq.F
Under Stairs Store = 1.2 Sq.M / 12.9 Sq.F
First Floor Storage Area
Store = 0.7 Sq.M / 7.5 Sq.F
Attic Storage
(Stira Stair + Floored) = 5.0 Sq.M / 53.8 Sq.F
Total Storage Area = 9.3 Sq.M / 100.0 Sq.F

Oldtown, Celbridge, Co. Kildare

House No. 161, 162, 163 & 164 - Type C1, F, F & E Terrace
First Floor Plan

Drg. 992.PL.223

Dec 2018

Scale 1:100 @ A3



HOGAN ASSOCIATES