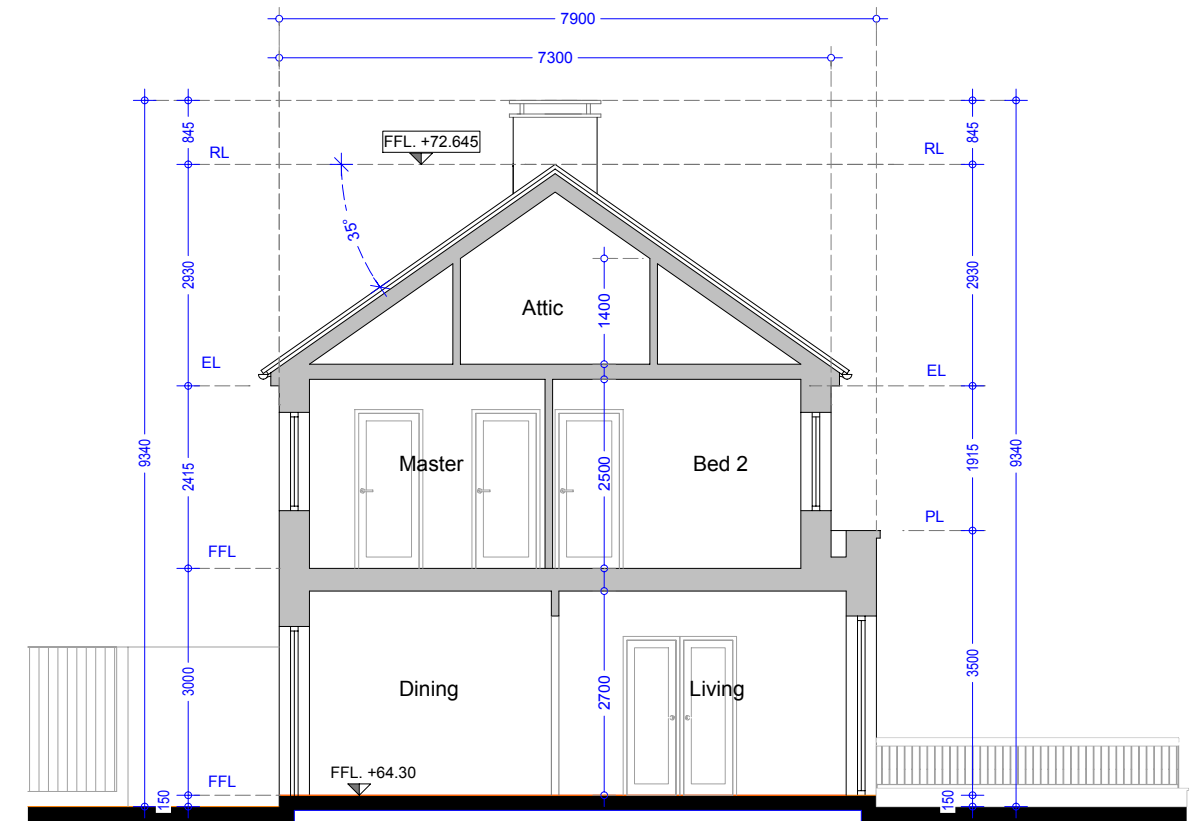
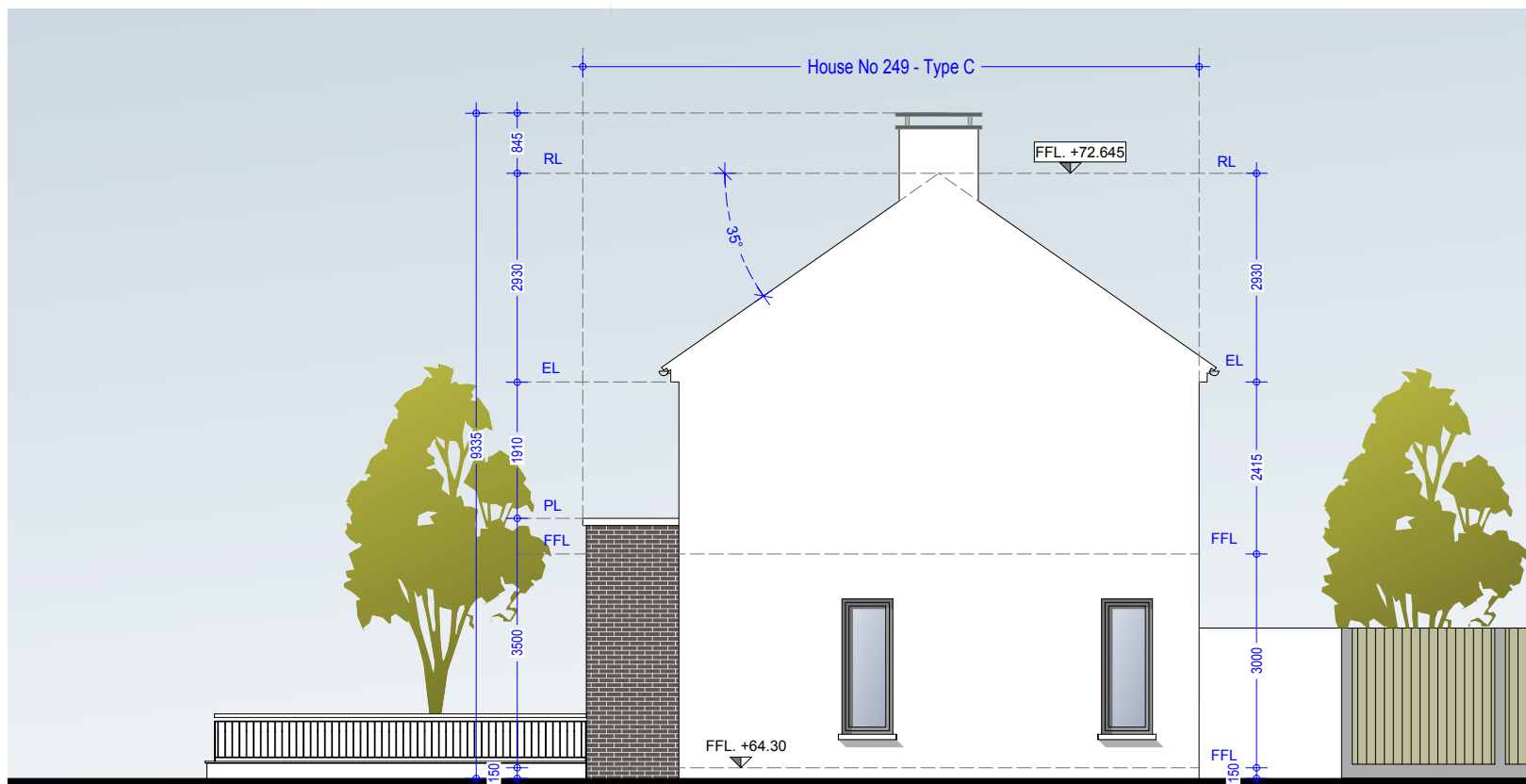


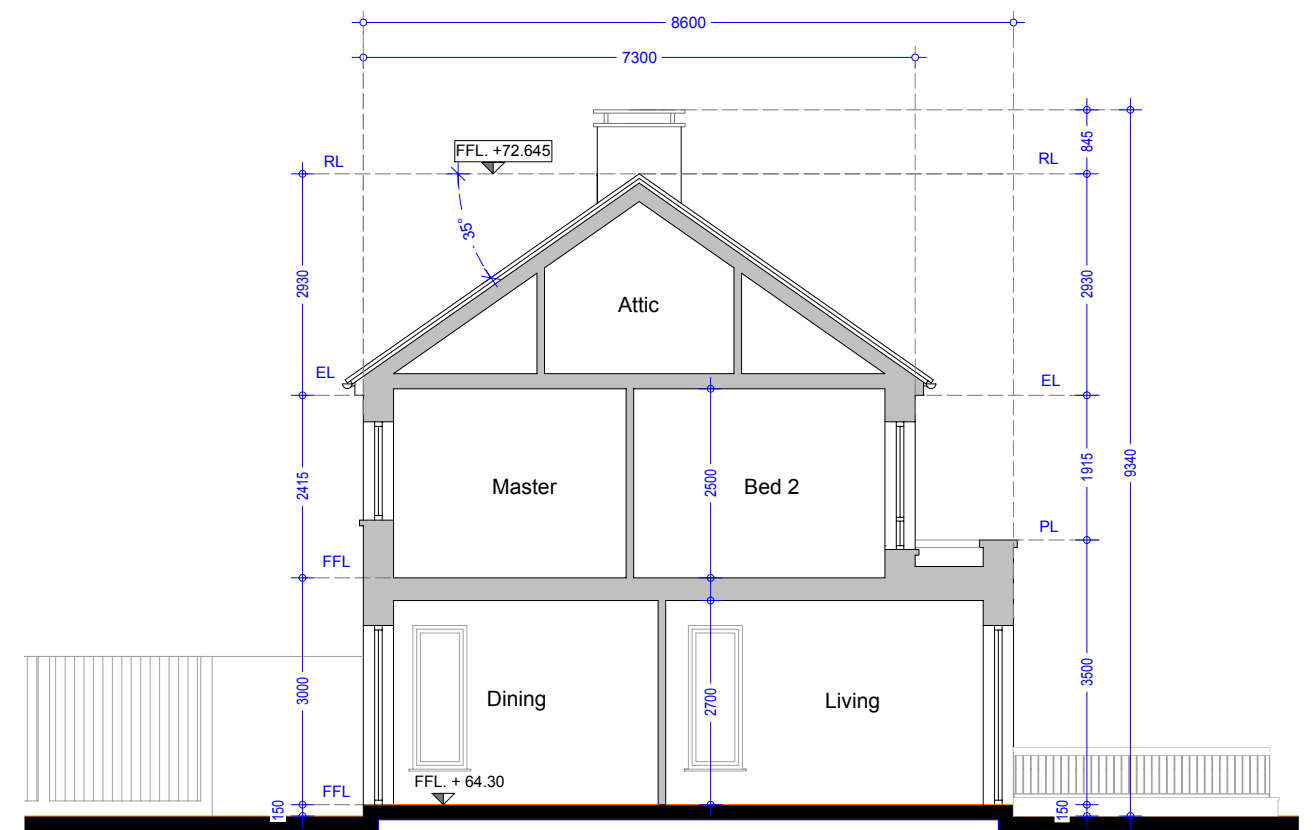
Side Elevation 01 - House Type E (End of Terrace)



Section AA - House No. 251 - Type E



Side Elevation 02 - House Type C (End of Terrace)



Section BB - House No. 249 - Type C

**Material Specifications**

- External Wall** - Smooth render painted white - projections will be dark grey brick or natural stone.
- Windows** - Upvc Double Glazed windows.
- External Doors** - Aluminium/Timber composite front door.
- Roof Finish** - Blue/Black Slate.
- Rainwater Goods** - Pvc - Colour black.

**Material Specifications (Continued)**

- Chimney Caps** - Powder coated steel - Colour black.
- High Boundary walls** - Natural Stone / smooth render painted white / dark grey brick.
- Low Boundary walls** - Smooth render painted white with limestone cappings and steel railing painted.

**Oldtown, Celbridge, Co. Kildare**

House No. 251, 250 & 249 - Type E, E & C Terrace  
Side Elev & Sec AA + BB

Drg. 992.PL.242

Dec 2018

Scale 1:100 @ A3



HOGAN ASSOCIATES