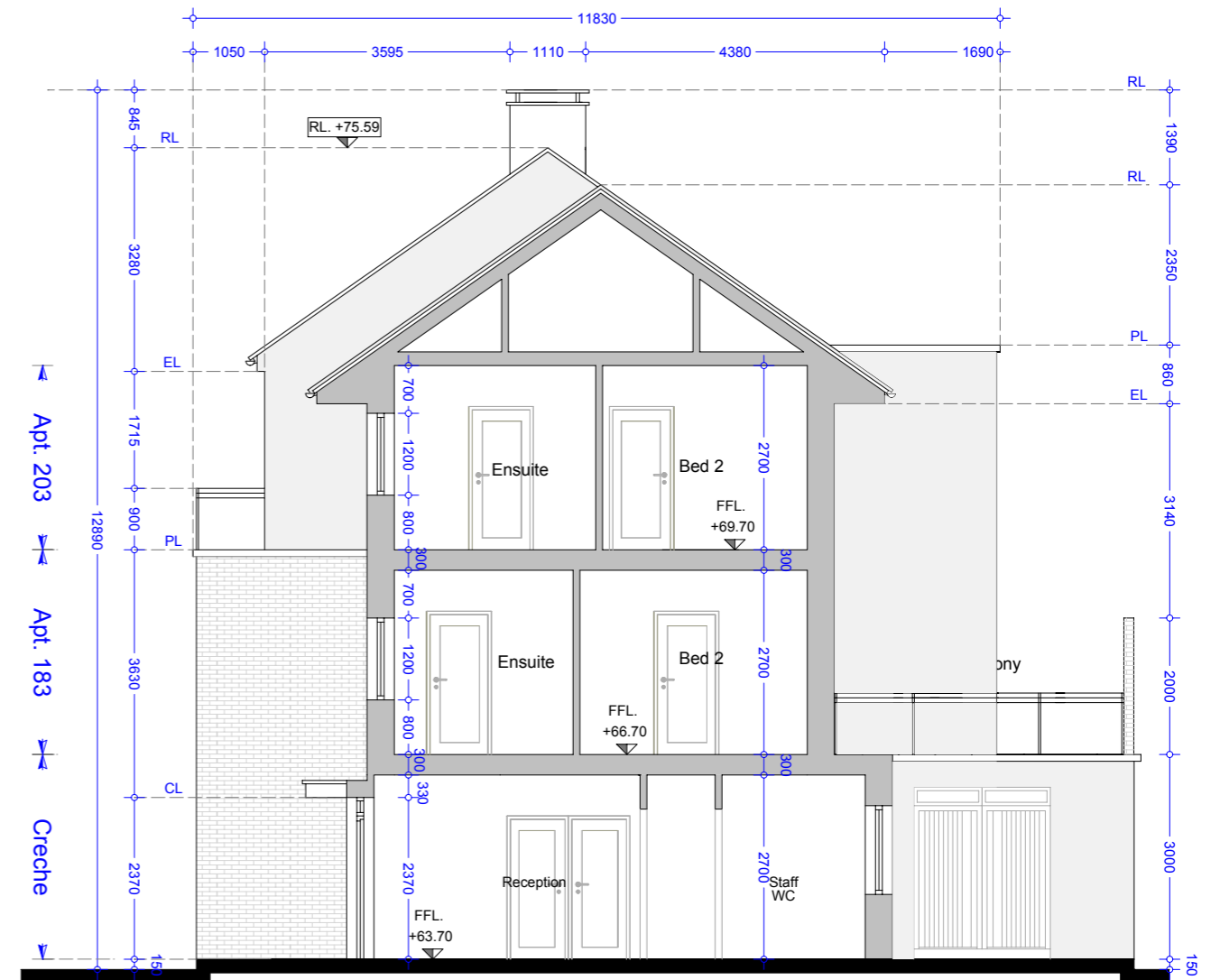


Section AA
Creche & Apartments Nos. 184 & 204



Section BB
Creche & Apartments Nos. 183 & 203

Material Specifications

- External Wall** - Smooth render painted white - projections will be dark grey brick or natural stone.
- Windows** - Upvc Double Glazed windows.
- External Doors** - Aluminium/Timber composite front door.
- Roof Finish** - Blue/Black Slate.
- Rainwater Goods** - Pvc - Colour black.

Material Specifications (Continued)

- Chimney Caps** - Powder coated steel - Colour black.
- High Boundary walls** - Natural Stone / smooth render painted white / dark grey brick.
- Low Boundary walls** - Smooth render painted white with limestone cappings and steel railing painted.
- Balcony** - Laminated Glass.

Oldtown, Celbridge, Co. Kildare

Creche & 3Bed Apartments 183, 184, 203 & 204
(Type G & G1) Sections AA & BB

Drg. 992.PL.249

Dec 2018

Scale 1:100 @ A3



HOGAN ASSOCIATES