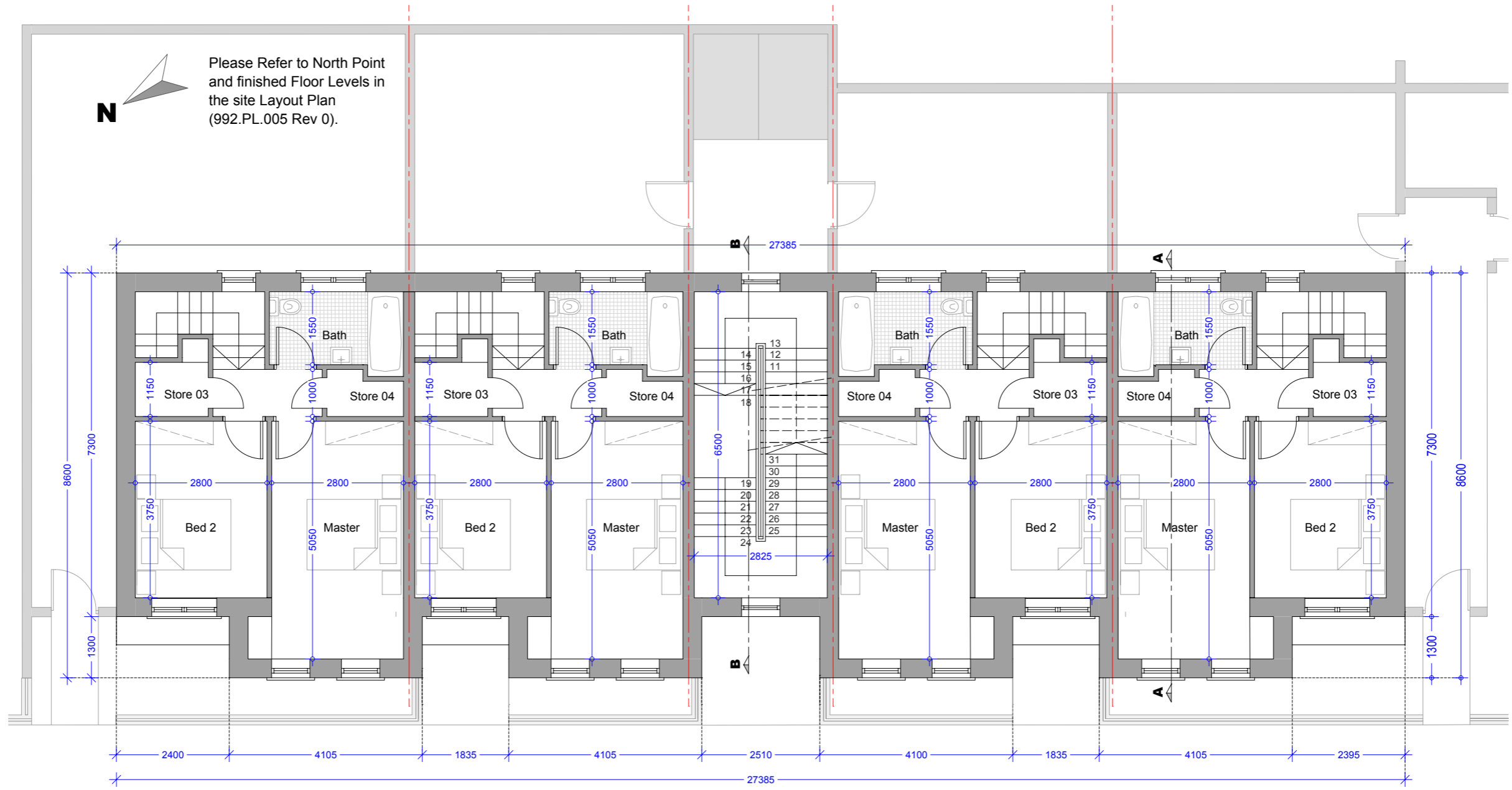


Type H1 (2 bed Apt.)

No's 20, 21, 26, 27, 32, 33,
39, 196, 197, 200, 207, 208,
213, 214, 219, 220, 223, 228,
229, 234, 235, 240, 243, 244



First Floor Plan
2 Bed Duplex Apartment H
Area = 40.69 m2 / 437.98 sqf

First Floor Plan
2 Bed Duplex Apartment H
Area = 40.69 m2 / 437.98 sqf

First Floor Plan
2 Bed Duplex Apartment H
Area = 40.69 m2 / 437.98 sqf

First Floor Plan
2 Bed Duplex Apartment H
Area = 40.69 m2 / 437.98 sqf

First Floor Plan - 2 Bed Duplex Apartment H	
Ground Floor Area = 41.33 m2 / 444.87 sqf	Ground Floor Storage Area
First Floor Area = 40.69 m2 / 437.98 sqf	Store 01 = 1.37 m2 / 14.75 sqf
Total Duplex Floor Area = 82.02 m2 / 882.86 sqf	Store 02 = 1.85 m2 / 19.91 sqf
Master Bedroom = 14.14 m2 / 152.20 sqf	First Floor Storage Area
Bedroom 02 = 10.49 m2 / 112.91 sqf	Store 03 = 2.06 m2 / 22.17 sqf
	Store 04 = 1.41 m2 / 15.17 sqf
	Total Storage Area = 6.69 m2 / 72.00 sqf

Oldtown, Celbridge, Co. Kildare

Type H & H1 - 2 Bed Duplex Apartment
First Floor Plan

Drg. 992.PL.251

Dec 2018

Scale 1:100 @ A3



HOGAN ASSOCIATES