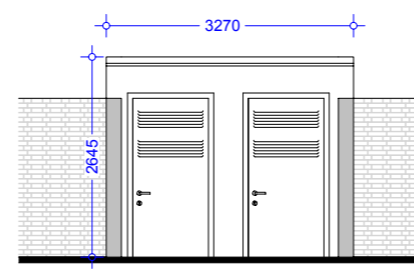
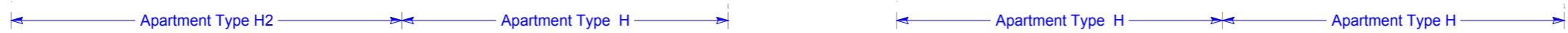




**Front Elevation (Duplex Apartments) - Types H, H1 & H2**



**Front Elevation of Bin/Bike Store for 2nd floor Apartments**

**Material Specifications**

- External Wall** - Smooth render painted white - projections will be dark grey brick or natural stone.
- Windows** - Upvc Double Glazed windows.
- External Doors** - Aluminium/Timber composite front door.
- Roof Finish** - Blue/Black Slate.
- Rainwater Goods** - Pvc - Colour black.

**Material Specifications (Continued)**

- Chimney Caps** - Powder coated steel - Colour black.
- High Boundary walls** - Natural Stone / smooth render painted white / dark grey brick.
- Low Boundary walls** - Smooth render painted white with limestone cappings and steel railing painted.
- Balcony** - Laminated glass

Please Refer to north point and finished floor levels in the site layout plan (992.PL.005 Rev 0).

**Oldtown, Celbridge, Co. Kildare**

**Type H2, H & H1 - 2 Bed Apartment Front Elevation**

Drg. 992.PL.260

Dec 2018

Scale 1:100 @ A3



HOGAN ASSOCIATES