

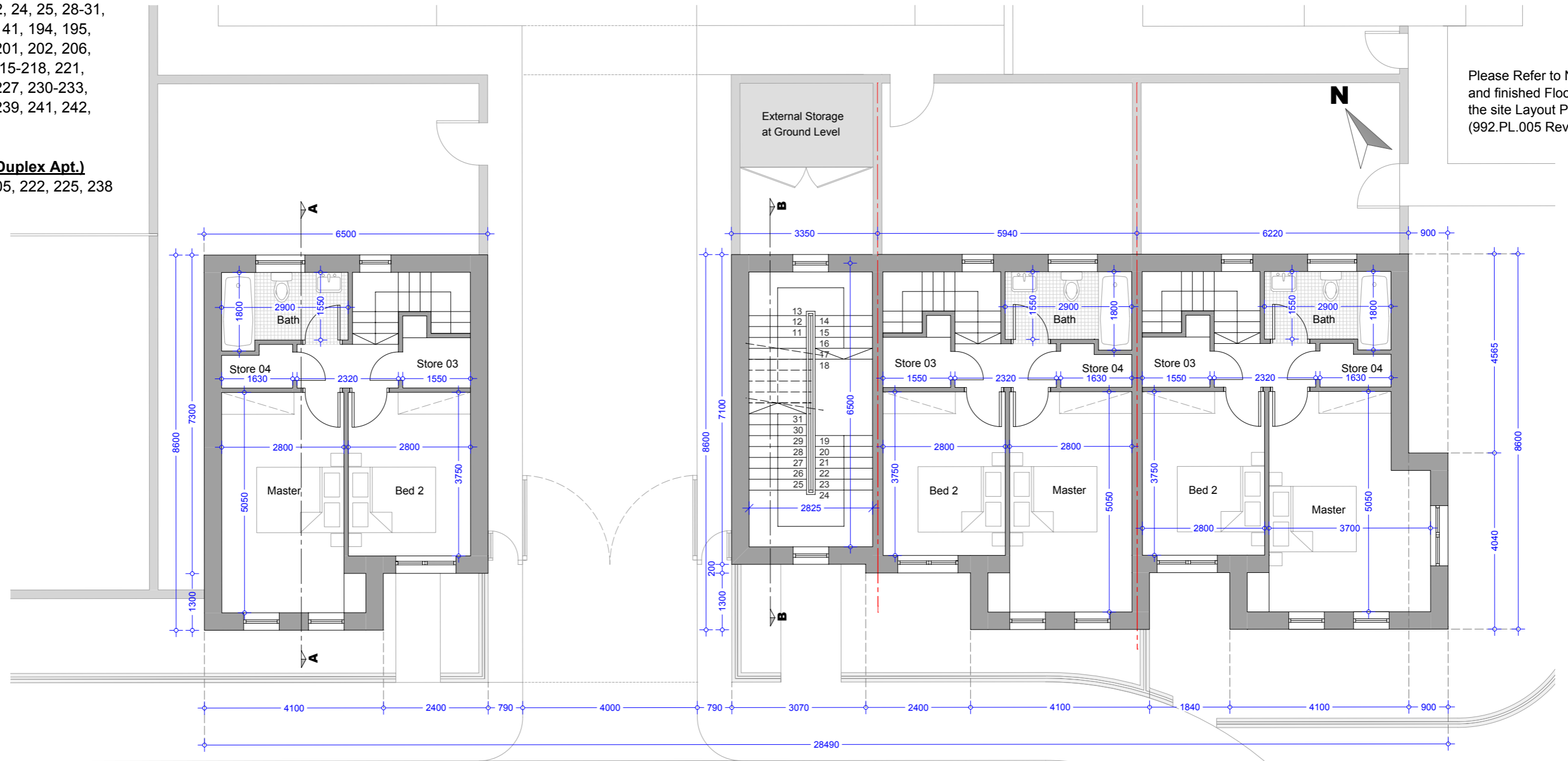
Type H (Duplex Apt.)

No's 19, 22, 24, 25, 28-31,
34, 35, 40, 41, 194, 195,
198, 199, 201, 202, 206,
209-212, 215-218, 221,
224, 226, 227, 230-233,
236, 237, 239, 241, 242,
245, 246.

Type H2 (Duplex Apt.)

No's 23, 205, 222, 225, 238

Please Refer to North Point
and finished Floor Levels in
the site Layout Plan
(992.PL.005 Rev 0).



**First Floor Plan
2 Bed Duplex Apartment H
First Floor Area = 40.69 m2 / 437.98 sqf**

**First Floor Plan
2 Bed Duplex Apartment H
First Floor Area = 40.69 m2 / 437.98 sqf**

**First Floor Plan
2 Bed Duplex Apartment H2
First Floor Area = 43.60 m2 / 469.31 sqf**

First Floor Plan - 2 Bed Duplex Apartment H2
Ground Floor Area = 43.60 m2 / 469.31 sqf
Total Duplex Floor Area = 88.45 m2 / 952.07 sqf

Master Bedroom = 15.43 m2 / 166.09 sqf
Bedroom 02 = 10.49 m2 / 112.91 sqf

Ground Floor Storage Area
Store 01= 1.37 m2 / 14.75 sqf
Store 02= 1.85 m2 / 19.91 sqf
First Floor Storage Area
Store 03 = 2.06 m2 / 22.17 sqf
Store 04 = 1.41 m2 / 15.17 sqf
Total Storage Area = 6.69 m2 / 72.00 sqf

First Floor Plan - 2 Bed Duplex Apartment H
First Floor Area = 40.69 m2 / 437.98 sqf
Total Duplex Floor Area = 82.02 m2 / 882.86 sqf

Master Bedroom = 14.14 m2 / 152.20 sqf
Bedroom 02 = 10.49 m2 / 112.91 sqf

Ground Floor Storage Area
Store 01= 1.37 m2 / 14.75 sqf
Store 02= 1.85 m2 / 19.91 sqf
First Floor Storage Area
Store 03 = 2.06 m2 / 22.17 sqf
Store 04 = 1.41 m2 / 15.17 sqf
Total Storage Area = 6.69 m2 / 72.00 sqf

Oldtown, Celbridge, Co. Kildare

Type H2, H & H1 Apartments 19, 20, 21, 22 & 23
2Bed Apartments - First Floor Plan

Drg. 992.PL.265

Dec 2018

Scale 1:100 @ A3



HOGAN ASSOCIATES