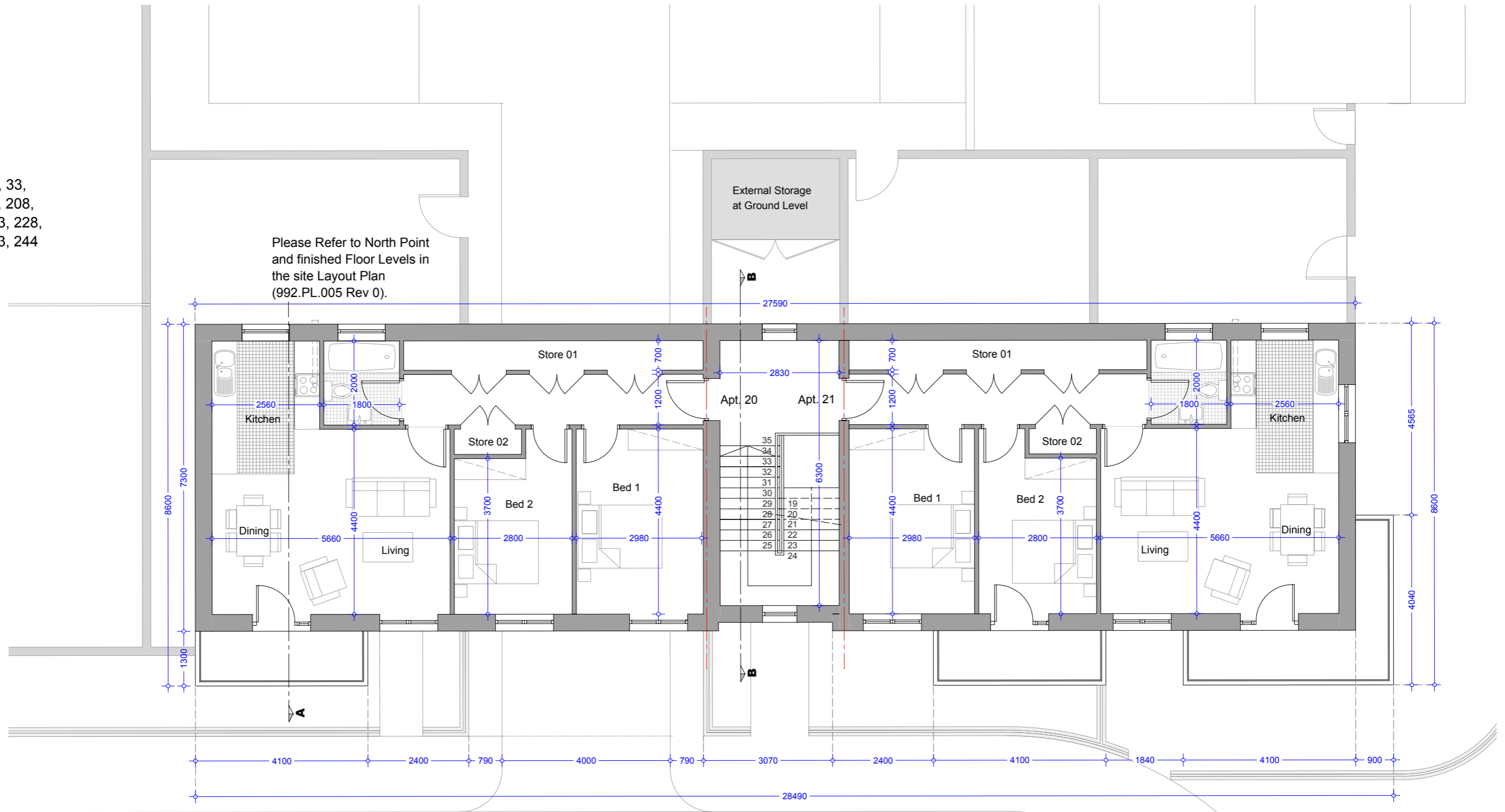


Type H1 (2 bed Apt.)

No's 20, 21, 26, 27, 32, 33,
39, 196, 197, 200, 207, 208,
213, 214, 219, 220, 223, 228,
229, 234, 235, 240, 243, 244

Please Refer to North Point
and finished Floor Levels in
the site Layout Plan
(992.PL.005 Rev 0).



Second Floor Plan - 2 Bed Apartment Type H1
Second Floor Apartment Area = 75.66 m² / 814.39 sqf

Second Floor Plan - 2 Bed Apartment Type H1
Second Floor Apartment Area = 75.66 m² / 814.39 sqf

Second Floor Plan - 2 Bed Apartment Type H1

Second Floor Apartment Area = 75.66 m² / 814.39 sqf

Kitchen/Living/Dining = 30.28 m² / 325.93 sqf
Master Bedroom = 12.45 m² / 134.01 sqf
Bedroom 02 = 11.79 m² / 126.91 sqf

Second Floor Storage Area

Store 01 = 4.95 m² / 53.28 sqf
Store 02 = .96 m² / 10.33 sqf
Store 03 (External at Ground Floor)
= 3.29 m² / 35.41 sqf
Total Storage Area = 9.20 m² / 99.03 sqf

Oldtown, Celbridge, Co. Kildare

Type H2, H & H1 Apartments 19, 20, 21, 22 & 23
2Bed Apartments - Second Floor Plan

Drg. 992.PL.266

Dec 2018

Scale 1:100 @ A3



HOGAN ASSOCIATES