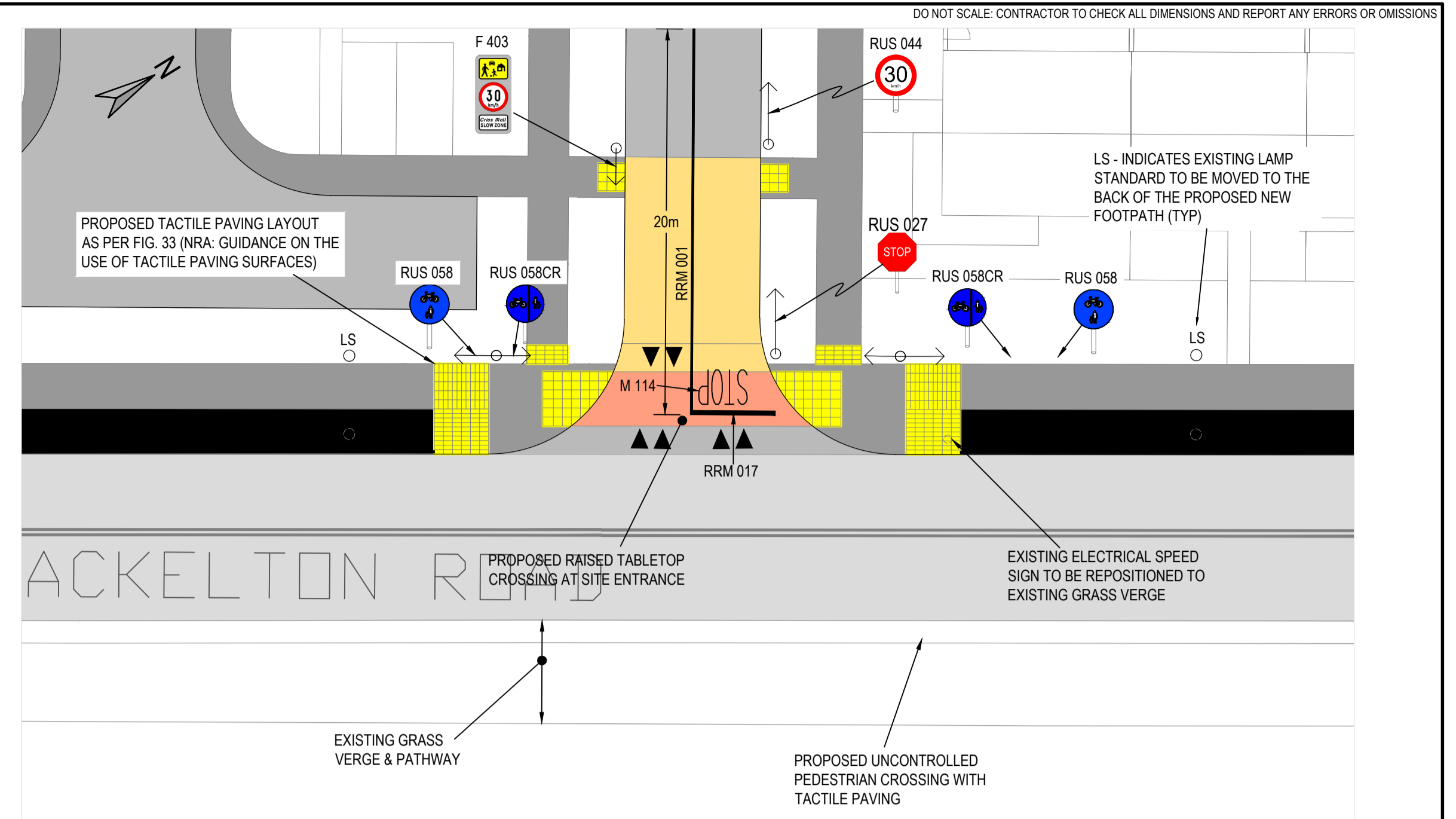


DETAIL 1 - PROPOSED TRANSITION FROM EXISTING TO PROPOSED INCLUDING BUS STOP
SCALE 1:200



DETAIL 2 - PROPOSED SITE ENTRANCE ONTO SHACKLETON ROAD
SCALE 1:200

TABLE OF ROAD MARKINGS

SIGN NUMBER	DESCRIPTION	NOTES
RRM 001	CONTINUOUS SINGLE CENTRE LINE	WHITE, CONTINUOUS LINE, 100mm WIDE
RRM 002B	BROKEN ROAD CENTRE LINE	WHITE, 3000mm LINE, 3000mm GAP, 150mm WIDE
RRM 011	PARKING BAYS	WHITE, CONTINUOUS LINE, 100mm WIDE
RRM 017	STOP LINE	WHITE, CONTINUOUS LINE, 200mm WIDE
RRM 018	YIELD LINE	WHITE, 500mm LINE, 600mm GAP, 200mm WIDE
RRM 018C	CYCLE TRACK - YIELD LINE	WHITE, 300mm LINE, 300mm GAP, 100mm WIDE
RRM 022	EDGE OF CYCLE TRACK	WHITE, CONTINUOUS LINE, 100mm WIDE
RRM 023	EDGE OF CYCLE TRACK - BROKEN LINE	WHITE, 750mm LINE, 750mm GAP, 100mm WIDE
RRM 005	DIRECTIONAL ARROW - LEFT	WHITE, 3.6m LONG
M 102	BIFURCATION ARROWS - AHEAD & LEFT	WHITE, 8m LONG
M 111	PEDESTRIAN MARKING	WHITE
M 114	STOP WORDED MARKING	WHITE, 1.6m LONG LETTERING
M 115	TRIANGULAR YIELD MARKING	WHITE, 3.75m LONG
M 116	CYCLE PATH MARKING	WHITE
M 125	DIRECTIONAL ARROW - AHEAD & RIGHT	WHITE, 3.6m LONG

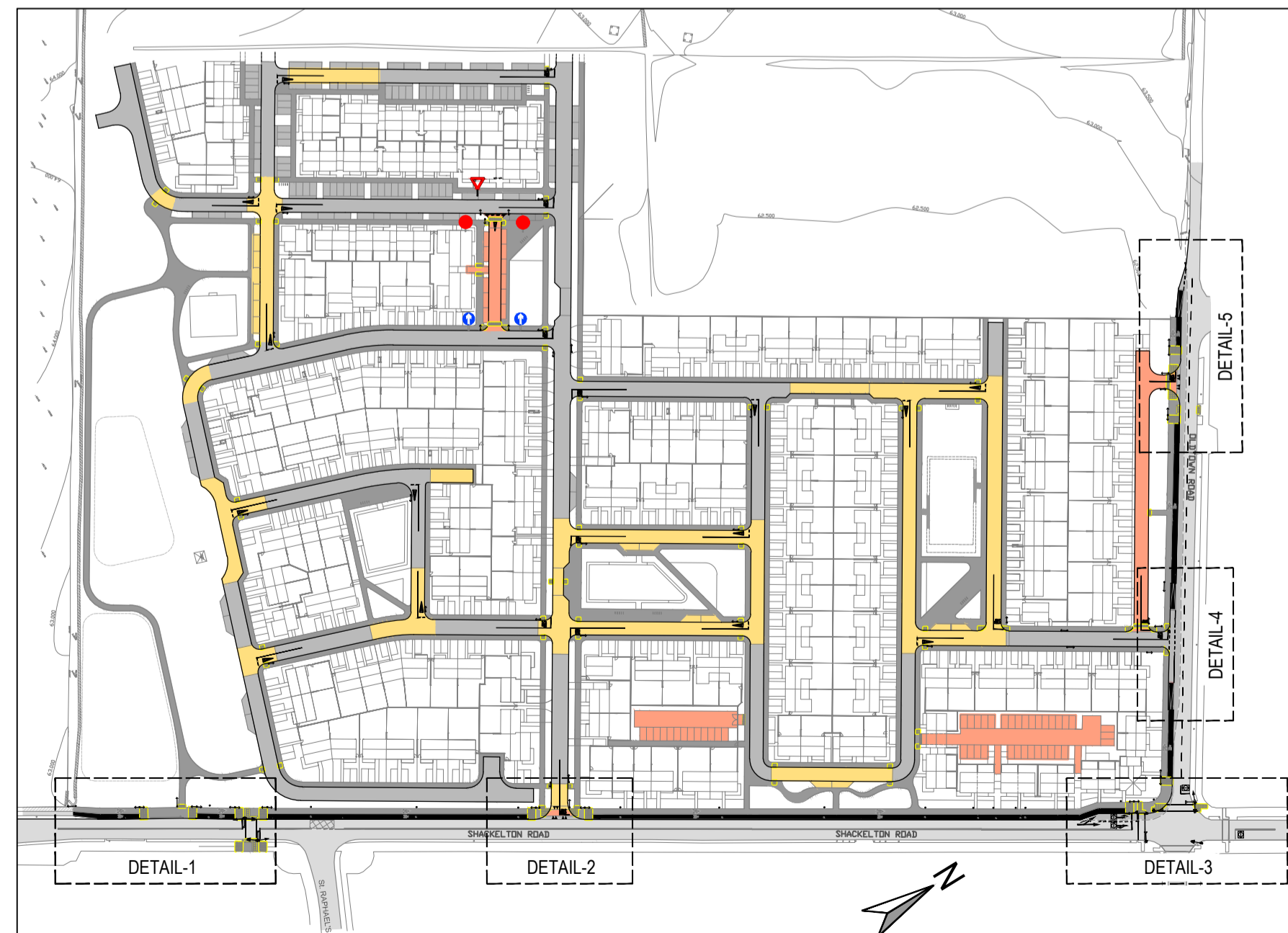
TABLE OF ROAD SIGNS

SIGN NUMBER	DESCRIPTION	NOTES
RUS 026	YIELD	600mm WIDE SIGN
RUS 027	STOP	600mm WIDE SIGN
RUS 058CR	SEGREGATED CYCLE & PEDESTRIAN ROUTE (CYCLE ON RIGHT)	600mm WIDE SIGN
RUS 058	SHARED TRACK, CYCLE / PEDESTRIAN	600mm WIDE SIGN
RUS 044	SPEED LIMIT SIGN, 30 KMH	600mm WIDE SIGN
F 403	SPEED ZONE SIGN, 30 KMH, CHILDREN AT PLAY	550mm WIDE, 1210mm HIGH SIGN
RUS 004	KEEP STRAIGHT AHEAD	600mm WIDE SIGN
RUS 050	NO ENTRY SIGN	600mm WIDE SIGN

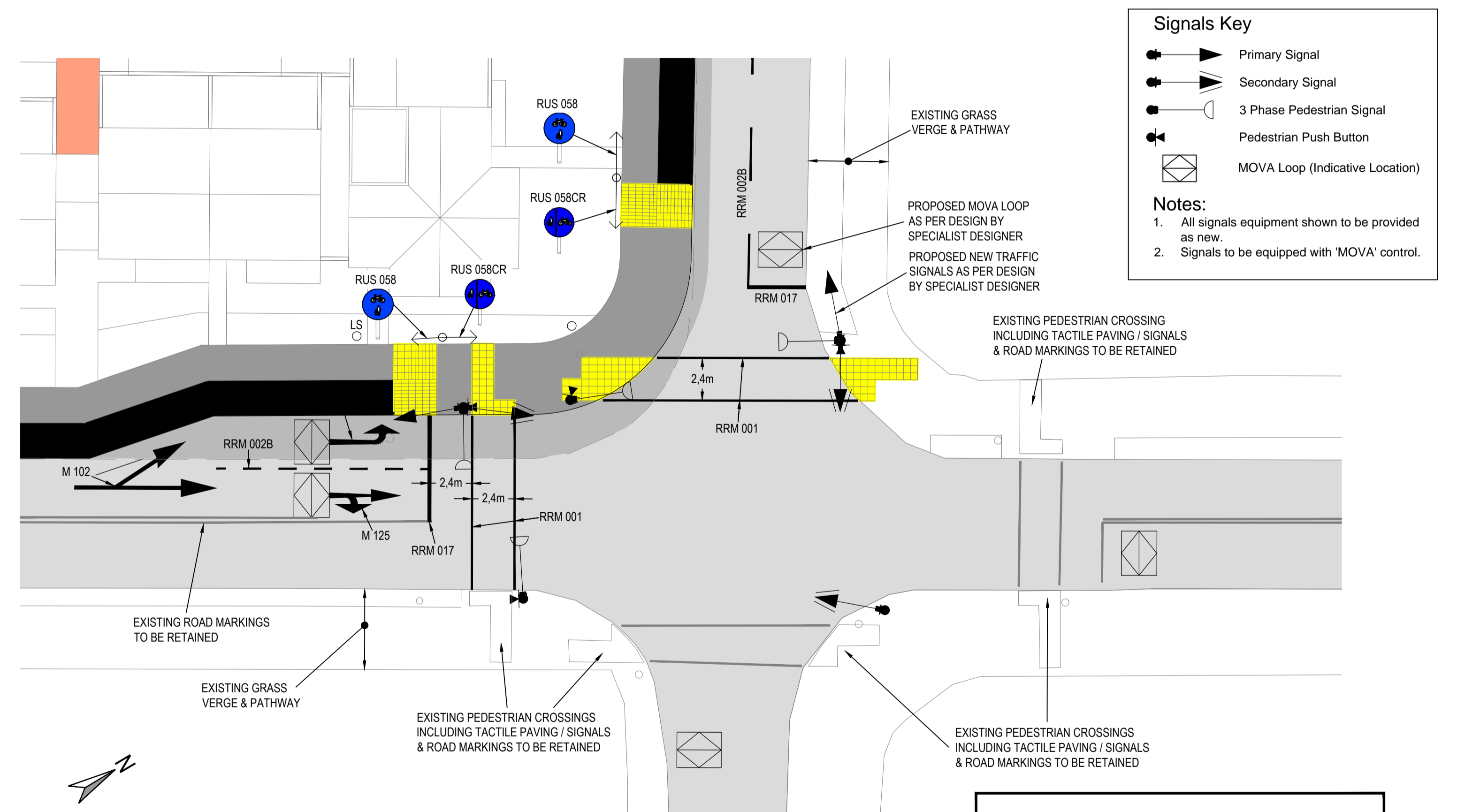
NOTE:
ALL ROAD MARKINGS TO BE IN ACCORDANCE WITH THE DEPARTMENT OF TRANSPORT TRAFFIC SIGNS MANUAL CHAPTER 7 - ROAD MARKINGS

NOTES:

- REFER TO ARCHITECTS DRAWINGS FOR ALL SITE & APPLICATION BOUNDARIES
- THIS DRAWING IS TO BE READ IN CONJUNCTION WITH ALL OTHER RELEVANT ARCHITECTS & ENGINEER'S DRAWINGS AND SPECIFICATIONS.
- USE FIGURED DIMENSIONS ONLY. DO NOT SCALE
- REFER TO SURVEY DRAWINGS FOR EXISTING SERVICES LAYOUTS AND MANHOLE INFORMATION
- ALL EXISTING SURFACES TO BE REINSTATED FOLLOWING DIVERSION OF SERVICES/CONSTRUCTION OF NEW SERVICES
- THE CONTRACTOR SHALL VERIFY ALL DIMENSIONS AND LEVELS WITH ARCHITECTURAL DRAWINGS PRIOR TO START OF CONSTRUCTION. ANY DISCREPANCIES TO BE NOTIFIED TO THE ENGINEER & ARCHITECT FOR RESOLUTION
- CONTRACTOR TO ENSURE ALL WATER & WASTEWATER RELATED WORKS ARE IN ACCORDANCE WITH THE IRISH WATER WATER INFRASTRUCTURE & WASTEWATER INFRASTRUCTURE CODE OF PRACTICE & STANDARD DETAILS DOCUMENTS
- TESTING OF ALL GRAVITY SEWERS AND MANHOLES TO BE IN ACCORDANCE WITH IRISH WATER CODE OF PRACTICE FOR WASTEWATER INFRASTRUCTURE SECTION 4.10 TESTING OF GRAVITY SEWERS & MANHOLES



KEY PLAN
Scale NTS



DETAIL 3 - PROPOSED WORKS TO EXISTING JUNCTION
SCALE 1:200

Signals Key

- Primary Signal
- Secondary Signal
- 3 Phase Pedestrian Signal
- Pedestrian Push Button
- MOVA Loop (Indicative Location)

Notes:

- All signals equipment shown to be provided as new.
- Signals to be equipped with 'MOVA' control.

LEGEND

- EXISTING ROADWAY
- PROPOSED ROADWAY (DMRA SURFACING)
- PROPOSED ROADWAY (COLOURED SURFACE)
- PROPOSED COLOURED SHARED SURFACE
- PROPOSED PATHWAY
- PROPOSED CYCLE TRACK (RAISED)
- PROPOSED CYCLE TRACK (ON ROAD)
- PROPOSED TACTILE PAVING OUTLINE

PLANNING ISSUE

S2.P01	ISSUED FOR PLANNING	11.12.2018	MF	AL
Rev.	Note	Date	Drawn	Check
<p>DONNACHADH O'BRIEN & ASSOCIATES CONSULTING ENGINEERS</p> <p>UNIT 5C ELM HOUSE MILLENNIUM PARK NAAS CO. KILDARE</p> <p>PHONE +353 45 984 042</p> <p>INFO@DOBRIEN-ENGINEERS.IE WWW.DOBRIEN-ENGINEERS.IE</p>		<p>Client: O'FLYNN CONSTRUCTION CO. UNLIMITED COMPANY</p> <p>Project: OLD TOWN ROAD, CELBRIDGE</p> <p>Drawing Title: PROPOSED MAIN ROAD MARKINGS & SIGNAGE SHEET 1 OF 2</p>		
Drawn By: MF	Checked By: AL	Approved By: DOB	Date: NOV'18	Scale: 1:200
Project Number: DOBA1704	Drawing Number: OLDCEL-DOB-00-SI-DR-C-065	Status Code: S2	Rev Number: P01	Sheet Size: A1