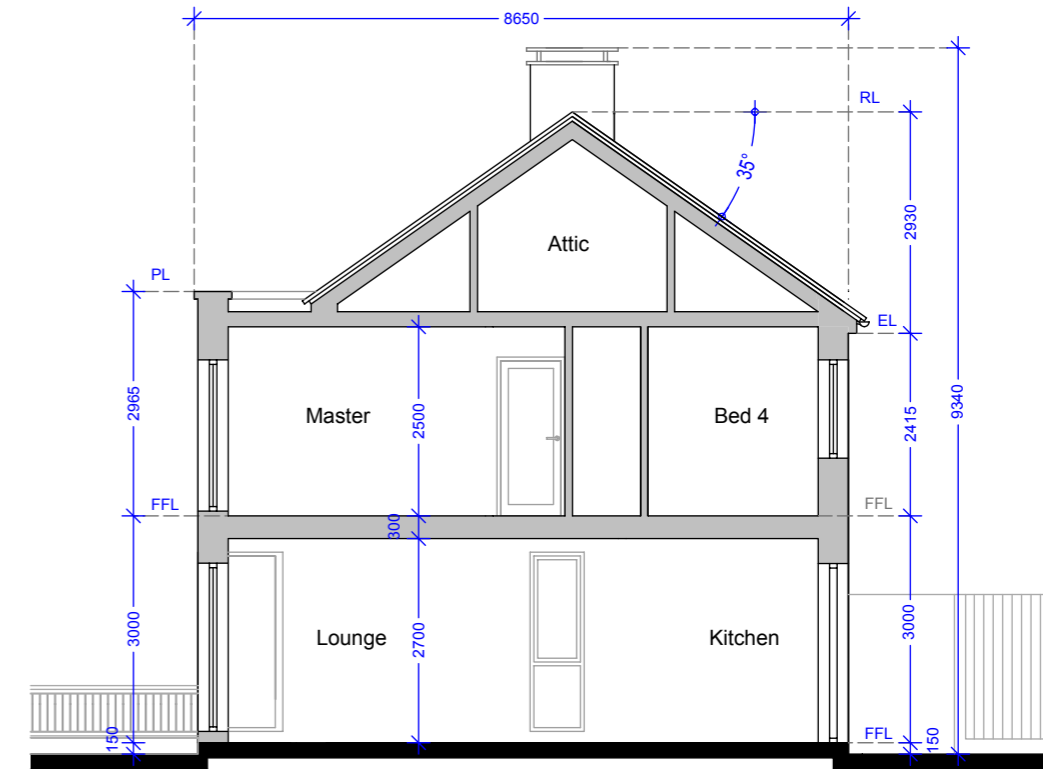
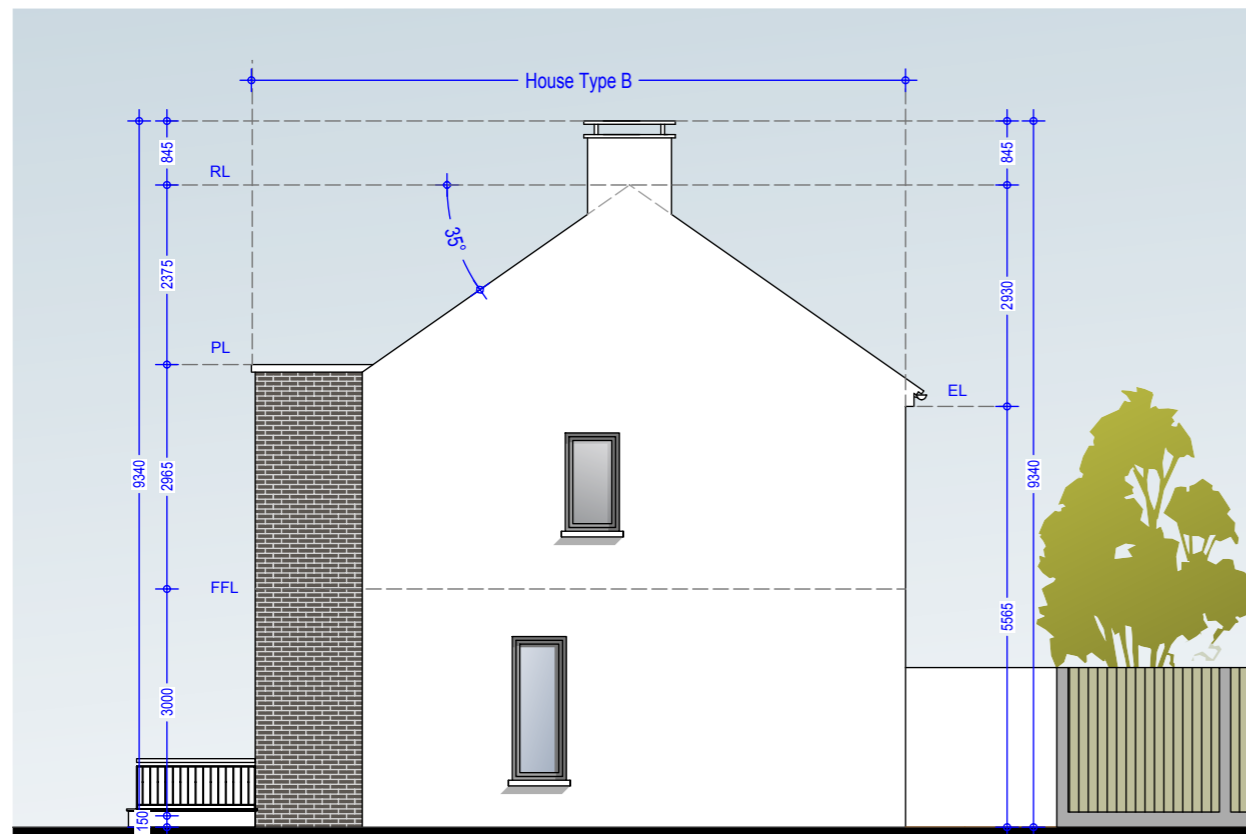


Side Elevation 01 - House Type B1 (End of Street)



Section CC - House Type B1 (End of Street)



Side Elevation 02 - House Type B (Mid Street)

House Type B1 (Semi Detached)

No.s 10, 11, 120, 121, 133, 139, 247.

No.s 139 & 247 have brick feature bay window, the remainder have stone in lieu.

See Drg. 992.PL.114 & 992.PL.115 for elevation

Type B (Semi Detached)

No.s 1-4 Inclusive

No's 7, 8, 9, 15, 16, 47, 53, 54, 63, 64, 65, 110, 111, 119, 132, 136, 137, 138, 140, 171, 172, 181, 182.

No's 1-4, 7, 8, 9, 132 have stone feature bay window in lieu of brick.

See Drg.992.PL.114 & 992.PL.115 for elevation

Material Specifications

External Wall - Smooth render painted white - projections will be dark grey brick or natural stone.

Windows - Upvc Double Glazed windows.

External Doors - Aluminium/Timber composite front door.

Roof Finish - Blue/Black Slate.

Rainwater Goods - Pvc - Colour black.

Material Specifications (Continued)

Chimney Caps - Powder coated steel - Colour black.

High Boundary walls - Natural Stone / smooth render painted white / dark grey brick.

Low Boundary walls - Smooth render painted white with limestone cappings and steel railing painted.

Please Refer to north point and finished floor levels in the site layout plan (992.PL.005 Rev 0).

Oldtown, Celbridge, Co. Kildare

House Type B1, B - 4 Bed Semi Detached

Side Elevations & Section CC

(Mid and End of Street)

Drg. 992.PL.111

Dec 2018

Scale 1:100 @ A3

HOGAN
ARCHITECTURE
URBAN DESIGN

HOGAN ASSOCIATES