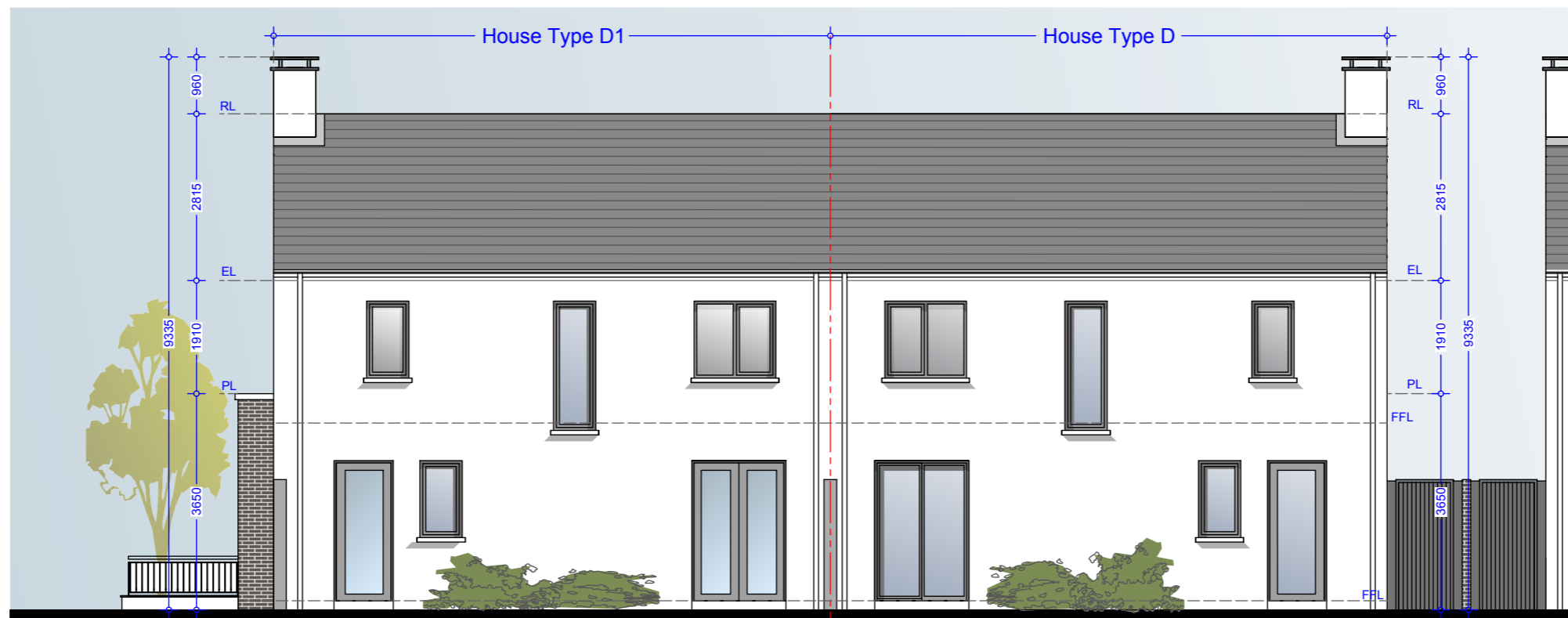


Front Elevaton - House Type D (Mid Street)

Front Elevaton - House Type D1 (End of Street)



Rear Elevation - House Type D1 (End of Street)

Rear Elevation - House Type D (Mid Street)

**Type D (Semi Detached)**  
 No's 5, 6, 43, 44, 45, 46, 49, 50, 51, 52,  
 103, 106, 107, 141, 142, 169, 179, 180  
 No's 5 & 6 have stone feature bay window  
 in lieu of brick.

**Type D1 (Semi Detached)**  
 No's 102 & 170

**Material Specifications**

**External Wall** - Smooth render painted white - projections will be dark grey brick or natural stone.  
**Windows** - Upvc Double Glazed windows.  
**External Doors** - Aluminium/Timber composite front door.  
**Roof Finish** - Blue/Black Slate.  
**Rainwater Goods** - Pvc - Colour black.

**Material Specifications (Continued)**

**Chimney Caps** - Powder coated steel - Colour black.  
**High Boundary walls** - Natural Stone / smooth render painted white / dark grey brick.  
**Low Boundary walls** - Smooth render painted white with limestone cappings and steel railing painted.

Please Refer to north point and finished floor levels in the site layout plan (992.PL.005 Rev 0).

**Oldtown, Celbridge, Co. Kildare**

House No. 169 & 170 - Type D, D1 - 3 Bed Semi Detached  
 Front & Rear Elevations (Mid and End of Street)

Drg. 992.PL.174

Dec 2018

Scale 1:100 @ A3



HOGAN ASSOCIATES