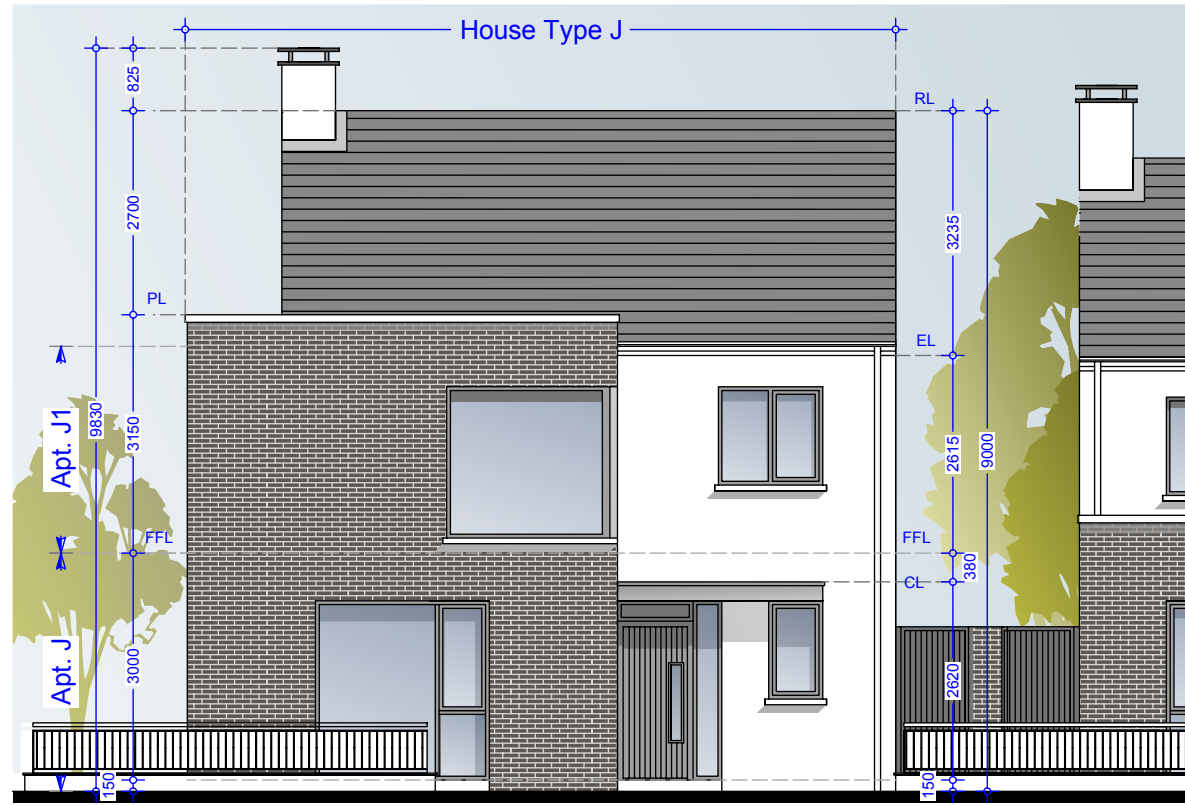
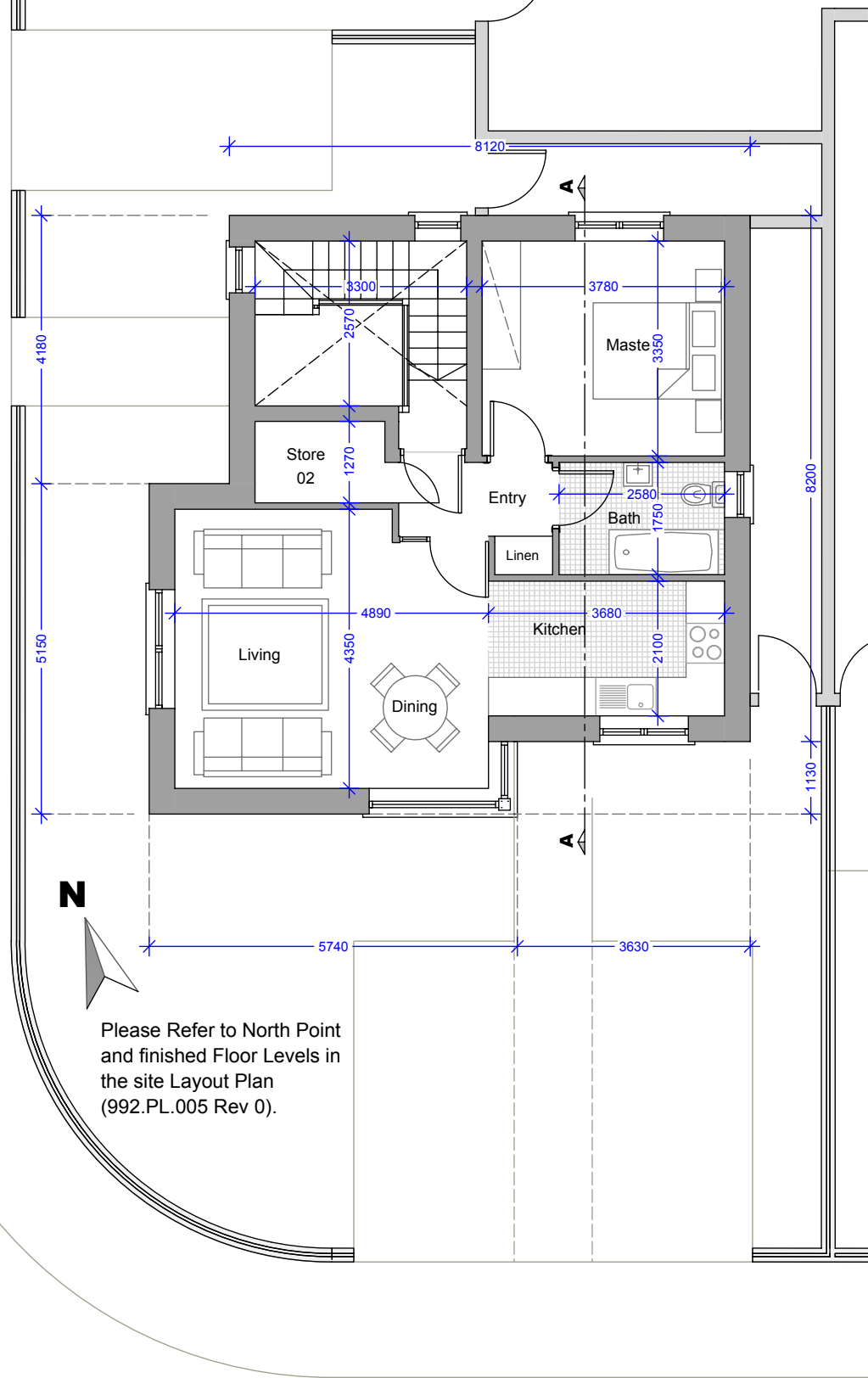
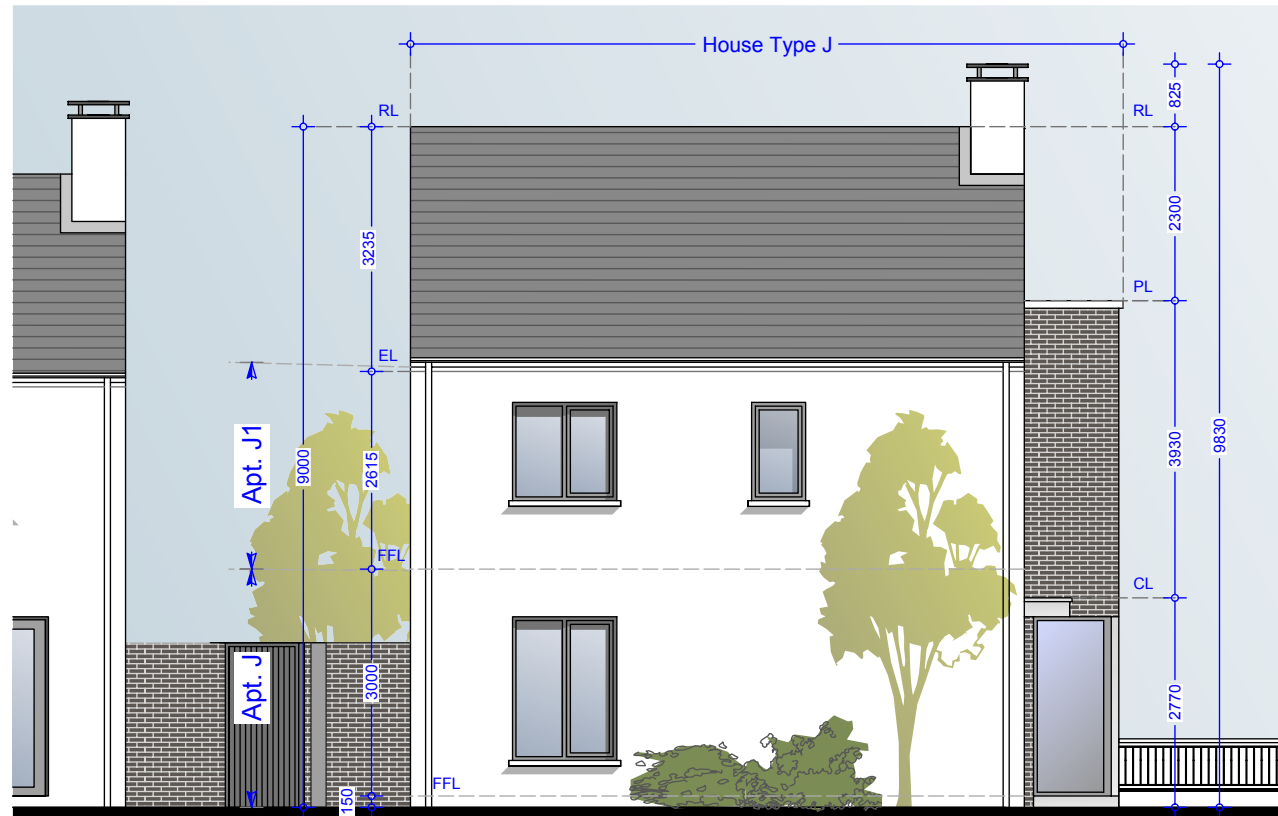


Apt. J No's: 156, 167, 192  
Apt. J1 No's: 157, 168, 193



Front Elevation - House Type J & J1 - (Ground Floor Entrance)



Rear Elevation - House Type J & J1

**Material Specifications**

- External Wall** - Smooth render painted white - projections will be dark grey brick or natural stone.
- Windows** - Upvc Double Glazed windows.
- External Doors** - Aluminium/Timber composite front door.
- Roof Finish** - Blue/Black Slate.
- Rainwater Goods** - Pvc - Colour black.
- Chimney Caps** - Powder coated steel - Colour black.
- High Boundary walls** - Natural Stone / smooth render painted white / dark grey brick.
- Low Boundary walls** - Smooth render painted white with limestone cappings and steel railing painted.

**Type J - 1Bed Duplex/Detached - First Floor Apartment**  
**Area = 72.20 m<sup>2</sup> / 777.15**  
**Total House Floor Area = 127.44 m<sup>2</sup> / 1371.74 Sqf**

First Floor Kitchen/Living = 28.22 m<sup>2</sup> / 303.75 Sqf  
 First Floor Master Bedroom = 12.66 m<sup>2</sup> / 136.27 Sqf

**First Floor Apartment Storage Area**  
 Store 01 = 1.67 Sq.M / 17.97 Sq.F  
 Store 02 = 2.57 Sq.M / 27.66 Sq.F  
 Total Storage Area = 4.24 Sq.M / 45.63 Sq.F

Please Refer to north point and finished floor levels in the site layout plan (992.PL.005 Rev 0).

**Oldtown, Celbridge, Co. Kildare**

**Type J & J1 - 1 Bed Duplex Apartments**  
**First Floor Plan, Front & Rear Elevations**

Drg. 992.PL.185

Dec 2018

Scale 1:100 @ A3



HOGAN ASSOCIATES